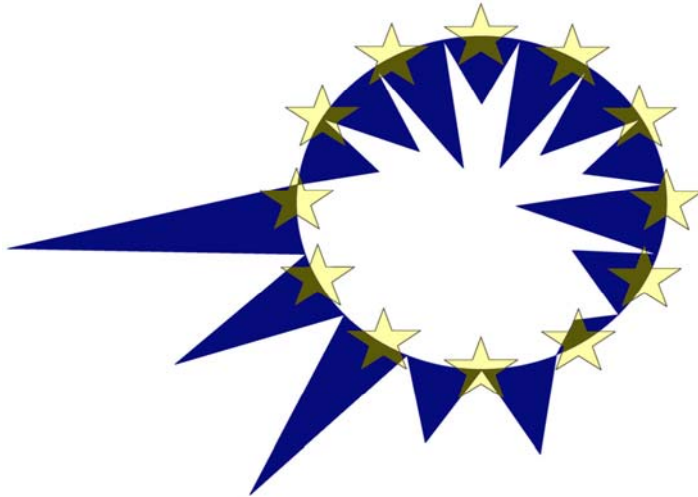


EUROMOD

DISTRIBUTION AND DECOMPOSITION OF DISPOSABLE INCOME IN THE EUROPEAN UNION



TAX-BENEFIT SYSTEMS: 1998
PUBLICATION DATE: SEPTEMBER 2004

CONTENTS	PAGE
LEGEND AND ACKNOWLEDGEMENTS	
INCOME COMPONENTS BY DECILE GROUP	
AUSTRIA	1
BELGIUM	2
DENMARK	3
FINLAND	4
FRANCE	5
GERMANY	6
GREECE	7
IRELAND	8
ITALY	9
LUXEMBOURG	10
NETHERLANDS	11
PORTUGAL	12
SPAIN	13
SWEDEN	14
UK	15
EU15	16
HOUSEHOLD CHARACTERISTICS BY INCOME DECILE GROUP	17-22
FIGURE 1: AVERAGE ORIGINAL AND DISPOSABLE INCOME	23
FIGURE 2: COMPOSITION OF DISPOSABLE INCOME	24
FIGURE 3: SHARES OF TAXES AND BENEFITS BY QUINTILE GROUP	25
APPENDIX 1: DATASETS	26
APPENDIX 2: GERMANY, SIMULATING ELIGIBILITY FOR SOCIAL ASSISTANCE	27
APPENDIX 3: SWEDEN, SIMULATING ELIGIBILITY FOR SOCIAL ASSISTANCE	28
APPENDIX 4: DECILE POINTS	29

LEGEND

Pages 1-15 The first two tables in each page 'AT' to 'UK' show national distributions of household income and the tax-benefit components of these incomes by decile group for each country. An additional row shows the same for people in households at risk of poverty. The first table shows Euro-values, using December 1998 market exchange rates. The second shows Euro-values adjusted for purchasing power parities (OECD \$-PPP)*. **Page 16** shows the same distributions for "EU-15-land", i.e. the 15 EU-countries before May 2004, as if they were one country.

Decile groups are formed by ranking according to equivalised household disposable income using the modified OECD-equivalence-scale and weighted by household size.

All other income figures are household averages per decile group. They are monthly for 1998 and not equivalised.

The tables for Germany (page 6) and Sweden (page 14) as well as the EU-15 results are based on simulations for these two countries which tie social assistance eligibility to recorded receipt in the data. Tables for Germany and Sweden which do not limit simulated eligibility in this way are given in Appendix 2 and 3 (**pages 27 and 28**).

The third table on **pages 1-15** indicates the redistributive nature of the tax and social security systems by showing the share of total income and each of the components that is found in each decile group and amongst households at risk of poverty. **Page 16** for "EU-15-land" needs two tables - one for Euro and one for PPP adjusted Euro.

The notes below the tables explain the national composition of the broad headings that are used in each table. The categorisation of instruments is an area where EUROMOD offers a flexibility which is needed if results are to conform to different conventions and are to be used for a range of purposes. The categories chosen for these tables are simply for illustrative purposes. Note that social insurance contributions refer only to the employees' share and that benefits also include public pensions. Also note that it is possible that model generated variables contain zero values for all individuals (for example if rules for a benefit do not apply for any individual in the data).

Pages 17-21 provide background demographic information on households in the different deciles and households classified as being at risk of poverty for the 15 countries. **Page 22** shows the same information for "EU-15-land".

Acknowledgements:

The preparation of these tables is part of the MICRESA (Micro Analysis of the European Social Agenda) project, financed by the Improving Human Potential programme of the European Commission (SERD-2001-00099).

EUROMOD relies on micro-data from 12 different sources for fifteen countries. These are the European Community Household Panel (ECHP) User Data Base made available by Eurostat; the Austrian version of the ECHP made available by the Interdisciplinary Centre for Comparative Research in the Social Sciences; the Panel Survey on Belgian Households (PSBH) made available by the University of Liège and the University of Antwerp; the Income Distribution Survey made available by Statistics Finland; the Enquête sur les Budgets Familiaux (EBF) made available by INSEE; the public use version of the German Socio Economic Panel Study (GSOEP) made available by the German Institute for Economic Research (DIW), Berlin;

the Living in Ireland Survey made available by the Economic and Social Research Institute; the Survey of Household Income and Wealth (SHIW95) made available by the Bank of Italy; the Socio-Economic Panel for Luxembourg (PSELL-2) made available by CEPS/INSTEAD; the Socio-Economic Panel Survey (SEP) made available by Statistics Netherlands through the mediation of the Netherlands Organisation for Scientific Research - Scientific Statistical Agency; the Income Distribution Survey made available by Statistics Sweden; and the Family Expenditure Survey (FES), made available by the UK Office for National Statistics (ONS) through the Data Archive. Material from the FES is Crown Copyright and is used by permission. Neither the ONS nor the Data Archive bear any responsibility for the analysis or interpretation of the data reported here. An equivalent disclaimer applies for all other data sources and their respective providers cited in this acknowledgement.

EUROMOD is continually being improved and updated and the results presented here represent work in progress. Please send queries or comments to mu@econ.cam.ac.uk

These statistics may be used, but on the condition that the source of the information is properly mentioned in any (electronic or print) publication in which they are quoted. Please use the following citation in your references: EUROMOD statistics on Distribution and Decomposition of Disposable Income, accessed at www.econ.cam.ac.uk/dae/mu/emodstats/DecompStats.pdf on [date] using EUROMOD version no. [see below].

The figures presented here were produced by EUROMOD Version 27A.

* For a discussion about purchasing power parity indices and cross-national poverty comparisons see the appendix of Bradbury, Bruce and Markus Jäntti (1999), Child Poverty Across Industrialized Nations, UNICEF Innocenti Occasional Papers Economic and Social Policy Studies, no. 71.

AUSTRIA 1998

Mean of Income and Income-Components per Decile Group, EURO

Decile Group	Disposable Income	Original Income	of which Cur. Earned Inc.	All Benefits incl. Pub. Pen.	All Taxes	Social Ins. Contrib.	Simulated Benefits	Simulated Taxes
1	879	377	353	573	-2	73	32.4%	100.0%
2	1,399	894	855	733	60	168	17.6%	100.0%
3	1,620	1,197	1,139	764	118	222	16.5%	100.0%
4	1,818	1,406	1,322	840	172	256	12.8%	100.0%
5	2,069	1,976	1,918	694	241	360	15.7%	100.0%
6	2,188	2,109	2,046	756	302	375	12.4%	100.0%
7	2,468	2,454	2,382	855	398	443	6.8%	100.0%
8	2,825	3,164	3,115	767	548	558	8.7%	100.0%
9	3,053	3,493	3,419	861	697	604	6.6%	100.0%
10	4,327	5,003	4,803	1,564	1,509	730	2.2%	100.0%
All	2,275	2,226	2,153	846	416	380	11.5%	100.0%
Poor*	897	380	350	590	-1	73	30.8%	100.0%

Mean of Income and Income-Components per Decile Group, Euro adjusted for Purchasing Power Parities

Decile Group	Disposable Income	Original Income	of which Cur. Earned Inc.	All Benefits incl. Pub. Pen.	All Taxes	Social Ins. Contrib.	Simulated Benefits	Simulated Taxes
1	936	401	375	610	-2	77	32.4%	100.0%
2	1,489	952	910	780	64	178	17.6%	100.0%
3	1,724	1,273	1,212	813	125	237	16.5%	100.0%
4	1,935	1,497	1,407	894	183	272	12.8%	100.0%
5	2,202	2,103	2,042	738	257	383	15.7%	100.0%
6	2,328	2,244	2,177	804	322	399	12.4%	100.0%
7	2,627	2,612	2,535	910	424	471	6.8%	100.0%
8	3,007	3,368	3,316	817	583	594	8.7%	100.0%
9	3,250	3,718	3,639	917	741	643	6.6%	100.0%
10	4,606	5,325	5,112	1,664	1,606	777	2.2%	100.0%
All	2,421	2,369	2,291	900	443	405	11.5%	100.0%
Poor*	955	404	373	628	-1	78	30.8%	100.0%

PPP 0.9396

Share of Income and Income-Components received/paid by each Decile Group

Decile Group	Disposable Income	Original Income	of which Cur. Earned Inc.	All Benefits incl. Pub. Pen.	All Taxes	Social Ins. Contrib.	
1	4.7%	2.0%	2.0%	8.2%	-0.1%	2.3%	
2	5.7%	3.7%	3.7%	8.0%	1.3%	4.1%	
3	6.7%	5.1%	5.0%	8.5%	2.7%	5.5%	
4	7.5%	5.9%	5.7%	9.3%	3.9%	6.3%	Poor: HH at risk of poverty
5	8.3%	8.1%	8.1%	7.5%	5.3%	8.6%	i.e. equ. disp. inc. < 60% of Median
6	9.4%	9.3%	9.3%	8.8%	7.1%	9.7%	(see also Legend)
7	10.6%	10.7%	10.8%	9.8%	9.3%	11.3%	
8	11.8%	13.5%	13.7%	8.6%	12.5%	13.9%	
9	14.3%	16.7%	16.9%	10.9%	17.9%	17.0%	
10	21.1%	24.9%	24.7%	20.5%	40.2%	21.3%	
Poor*	5.0%	2.2%	2.1%	8.9%	0.0%	2.4%	

original income employment income + investment income + private pension benefits + other private transfers + self-employment income

taxes (sim.) withholding tax on capital income (kest) + national income tax

employee sics (sim.) employees' contrib. to housing subsidy (wohnbauforderungsbeitrag) + employees' compulsory union contrib. (kammerumlage) + self-employed contrib. to disability insurance + employee health soc.ins.contrib. + self-employed contrib. to health insurance + employee pension soc.ins.contrib. + self-employed contrib. to pension insurance + employee unemployment soc.ins.contrib.

benefits (sim.) maternity allowance supplement (zuschuss zum karenzgeld oder zur teilzeitbeihilfe) + minimum pension (ausgleichszulage) + minimum pension for civil servants (ergaenzungszulage) + child bonus for pensioners (kinderzuschuss (asvg)) + child bonus for civil service pensioners (kinderzulage (pg)) + child benefit (fbh) + new born health check bonus (mutter-kind-pass-bonus) + addition to child benefit for disabled children (erhoehte familienbeihilfe, flag par. 8 (4)) + provincial family bonus (familienzuschuss der bundeslaender) + social assistance (sozialhilfe) + small children benefit (kleinkindbeihilfe)

benefits (data) caring benefit (pflegegeld) + civil servant's pension (ruhebezuuge) + early retirement pension (vorzeitige alterspension, pv) + invalidity pension (invalidenpension, pv) + maternity allowance / allowance for parental leave (wochengeld / karenzgeld) + old age pension (alterspension, pv) + sickness benefit (kranken- und unfallversorgung) + other old age related schemes or benefits + survivor pension (hinterbliebenenpension (=witwen- u. waisenpension)) + unemployment benefit (notstandshilfe) + unemployment payment (arbeitslosengeld) + student payments + housing benefits

BELGIUM 1998

Mean of Income and Income-Components per Decile Group, EURO

Decile Group	Disposable Income	Original Income	of which Cur. Earned Inc.	All Benefits incl.Pub.Pen.	All Taxes	Social Ins. Contrib.	Simulated Benefits	Simulated Taxes
1	748	207	158	581	16	25	43.7%	100.0%
2	1,235	612	544	799	99	77	14.2%	100.0%
3	1,437	993	918	767	198	126	14.1%	100.0%
4	1,710	1,461	1,356	762	331	181	17.2%	100.0%
5	2,002	1,972	1,862	746	481	234	18.7%	100.0%
6	2,229	2,467	2,334	709	656	292	17.2%	100.0%
7	2,503	3,053	2,873	602	803	350	19.5%	100.0%
8	2,725	3,586	3,384	541	991	411	19.3%	100.0%
9	3,179	4,451	4,170	560	1,328	504	18.6%	100.0%
10	4,813	7,339	5,934	778	2,657	647	9.8%	100.0%
All	2,188	2,494	2,239	686	721	271	19.1%	100.0%
Poor*	772	212	163	604	17	26	40.1%	100.0%

Mean of Income and Income-Components per Decile Group, Euro adjusted for Purchasing Power Parities

Decile Group	Disposable Income	Original Income	of which Cur. Earned Inc.	All Benefits incl.Pub.Pen.	All Taxes	Social Ins. Contrib.	Simulated Benefits	Simulated Taxes
1	805	223	170	625	17	27	43.7%	100.0%
2	1,328	658	585	860	107	83	14.2%	100.0%
3	1,545	1,068	988	825	213	135	14.1%	100.0%
4	1,839	1,571	1,458	819	356	195	17.2%	100.0%
5	2,153	2,121	2,002	802	517	252	18.7%	100.0%
6	2,396	2,653	2,509	763	705	314	17.2%	100.0%
7	2,691	3,283	3,089	648	863	376	19.5%	100.0%
8	2,930	3,856	3,639	582	1,066	442	19.3%	100.0%
9	3,419	4,786	4,484	603	1,428	543	18.6%	100.0%
10	5,176	7,892	6,382	837	2,857	695	9.8%	100.0%
All	2,353	2,682	2,408	738	775	292	19.1%	100.0%
Poor*	831	228	175	649	18	28	40.1%	100.0%
						PPP	0.9299	

Share of Income and Income-Components received/paid by each Decile Group

Decile Group	Disposable Income	Original Income	of which Cur. Earned Inc.	All Benefits incl.Pub.Pen.	All Taxes	Social Ins. Contrib.	
1	4.4%	1.1%	0.9%	10.8%	0.3%	1.2%	
2	6.2%	2.7%	2.7%	12.8%	1.5%	3.1%	
3	7.1%	4.3%	4.4%	12.0%	3.0%	5.0%	
4	7.7%	5.8%	6.0%	11.0%	4.6%	6.6%	Poor: HH at risk of poverty
5	8.4%	7.2%	7.6%	9.9%	6.1%	7.9%	i.e. equ.disp.inc.< 60% of Median
6	9.3%	9.1%	9.5%	9.5%	8.3%	9.9%	(see also Legend)
7	10.3%	11.0%	11.5%	7.9%	10.0%	11.6%	
8	11.5%	13.3%	14.0%	7.3%	12.7%	14.1%	
9	13.2%	16.2%	16.9%	7.4%	16.8%	16.9%	
10	21.9%	29.3%	26.4%	11.3%	36.8%	23.8%	
Poor*	5.0%	1.2%	1.0%	12.4%	0.3%	1.4%	

original income employment income + investment income + maintenance payments + property income + private pension benefits + other private transfers + self-employment income

taxes (sim.) - in work benefit + national income tax + wealth or property taxes

employee sics (sim.) employee contrib. to healthcare and sickness insurance + health insurance and solidarity contrib. paid by pensioners + employee contrib. to pensions insurance + employee contrib. to unemployment insurance - soc.ins.contrib. reduction for low income workers + self-employed' soc.ins.contrib.

benefits (sim.) child benefit + child birth benefit + income support (revenu minimum de moyen d'existence or in abridged: minimex) + income support for the elderly (revenu garanti aux personnes agees)

benefits (data) anticipated pension (prépension) + career break allocation (indemnité de pause-carrière) + allocation for handicapped persons (allocations aux handicapés) + learning allocation (allocation de formation) + long sickness allocation (allocation d'invalidité) + other public pension income + professional illness allocation and work accident allocation (indemnité de maladie professionnel et indemnité d'accident du travail) + retirement pension (pension de retraite) + allocation from a special funds (allocation du fonds de sécurité d'existence) + short-sickness allocation (allocation de maladie) + survivor pension (pension de survie) + unemployment benefit (allocation de chômage) + young unemployed allocation (allocation d'attente) + student payments + maternity payments

DENMARK 1998

Mean of Income and Income-Components per Decile Group, EURO

Decile Group	Disposable Income	Original Income	of which Cur. Earned Inc.	All Benefits incl.Pub.Pen.	All Taxes	Social Ins. Contrib.	Simulated Benefits	Simulated Taxes
1	856	310	268	823	231	45	76.6%	100.0%
2	1,253	452	383	1,246	386	59	90.9%	100.0%
3	1,534	907	820	1,274	530	117	91.4%	100.0%
4	1,914	1,835	1,746	1,020	724	217	89.6%	100.0%
5	2,266	2,774	2,702	789	985	312	88.9%	100.0%
6	2,526	3,402	3,305	682	1,183	374	84.5%	100.0%
7	2,835	4,156	4,074	556	1,423	454	82.1%	100.0%
8	2,992	4,569	4,456	438	1,531	485	89.0%	100.0%
9	3,417	5,652	5,495	326	1,986	574	83.8%	100.0%
10	5,196	9,873	8,786	257	4,065	869	68.3%	100.0%
All	2,343	3,103	2,924	774	1,213	322	86.4%	100.0%
Poor*	872	318	271	835	236	46	77.0%	100.0%

Mean of Income and Income-Components per Decile Group, Euro adjusted for Purchasing Power Parities

Decile Group	Disposable Income	Original Income	of which Cur. Earned Inc.	All Benefits incl.Pub.Pen.	All Taxes	Social Ins. Contrib.	Simulated Benefits	Simulated Taxes
1	753	273	236	724	204	40	76.6%	100.0%
2	1,102	398	337	1,097	340	52	90.9%	100.0%
3	1,350	798	722	1,121	467	103	91.4%	100.0%
4	1,685	1,615	1,536	898	637	191	89.6%	100.0%
5	1,994	2,441	2,378	695	866	275	88.9%	100.0%
6	2,223	2,994	2,908	601	1,041	330	84.5%	100.0%
7	2,495	3,658	3,586	489	1,252	400	82.1%	100.0%
8	2,633	4,021	3,922	386	1,347	427	89.0%	100.0%
9	3,007	4,974	4,836	287	1,748	506	83.8%	100.0%
10	4,573	8,689	7,733	226	3,577	765	68.3%	100.0%
All	2,062	2,731	2,573	681	1,067	283	86.4%	100.0%
Poor*	767	280	239	735	208	40	77.0%	100.0%

PPP 1.1363

Share of Income and Income-Components received/paid by each Decile Group

Decile Group	Disposable Income	Original Income	of which Cur. Earned Inc.	All Benefits incl.Pub.Pen.	All Taxes	Social Ins. Contrib.	
1	5.1%	1.4%	1.3%	14.8%	2.7%	2.0%	
2	6.7%	1.8%	1.6%	20.1%	4.0%	2.3%	
3	7.3%	3.3%	3.1%	18.3%	4.9%	4.1%	
4	7.7%	5.5%	5.6%	12.3%	5.6%	6.3%	Poor: HH at risk of poverty
5	8.4%	7.7%	8.0%	8.8%	7.0%	8.4%	i.e. equ.disp.inc.< 60% of Median
6	9.1%	9.3%	9.6%	7.5%	8.3%	9.9%	(see also Legend)
7	10.2%	11.3%	11.7%	6.0%	9.9%	11.9%	
8	11.5%	13.2%	13.7%	5.1%	11.3%	13.5%	
9	13.4%	16.7%	17.3%	3.9%	15.0%	16.4%	
10	20.7%	29.7%	28.1%	3.1%	31.3%	25.2%	
Poor*	5.4%	1.5%	1.4%	15.8%	2.8%	2.1%	

original income employment income + investment income + maintenance payments + property income + self-employment income

taxes (sim.) bottom national income tax + local income tax (incl. average county, municipal and church tax) + middle national income tax + top national income tax

employee sics (sim.) own contrib. to supplementary pension scheme + general own soc.ins.contrib. + temporary own pension contrib. + voluntary unemployment insurance contrib.

benefits (sim.) housing benefit + unemployment benefit + child benefit (incl. ordinary, extra, special and multi children benefit) + day care subsidy + disability pension 1 - basic amount plus supplement (taxable, tapered) + disability pension 2 - special supplement plus incapacity amount (taxable, not tapered) + disability pension 3 - invalidity amount plus 'augmentation' plus special benefit for disabled with substantial earnings (not taxable, not tapered) + family allowance + housing allowance + old age pension + social assistance

benefits (data) student payments + maternity payments + supplementary pension + early retirement benefit ('efterløn') + survivor pension

FINLAND 1998

Mean of Income and Income-Components per Decile Group, EURO

Decile Group	Disposable Income	Original Income	of which Cur. Earned Inc.	All Benefits incl.Pub.Pen.	All Taxes	Social Ins. Contrib.	Simulated Benefits	Simulated Taxes
1	709	203	153	590	72	11	21.5%	93.8%
2	1,034	427	368	805	164	34	16.5%	96.5%
3	1,234	679	608	860	249	56	13.3%	97.3%
4	1,519	1,122	1,022	865	378	90	13.2%	97.4%
5	1,704	1,504	1,398	795	478	117	12.2%	98.0%
6	1,904	1,935	1,818	695	580	145	12.9%	98.0%
7	2,128	2,338	2,200	694	729	175	10.4%	98.2%
8	2,356	2,863	2,691	559	861	206	12.1%	98.3%
9	2,724	3,478	3,211	596	1,102	247	8.7%	98.1%
10	4,261	6,008	4,641	631	2,036	342	6.7%	96.7%
All	1,875	1,926	1,692	707	625	133	13.3%	97.5%
Poor*	693	187	138	584	68	10	22.0%	93.4%

Mean of Income and Income-Components per Decile Group, Euro adjusted for Purchasing Power Parities

Decile Group	Disposable Income	Original Income	of which Cur. Earned Inc.	All Benefits incl.Pub.Pen.	All Taxes	Social Ins. Contrib.	Simulated Benefits	Simulated Taxes
1	730	209	158	608	74	12	21.5%	93.8%
2	1,064	440	379	829	169	35	16.5%	96.5%
3	1,270	699	626	885	256	58	13.3%	97.3%
4	1,564	1,156	1,052	890	389	92	13.2%	97.4%
5	1,754	1,548	1,440	818	492	120	12.2%	98.0%
6	1,960	1,992	1,872	716	598	149	12.9%	98.0%
7	2,191	2,407	2,265	715	750	180	10.4%	98.2%
8	2,425	2,948	2,771	575	886	212	12.1%	98.3%
9	2,805	3,581	3,306	613	1,135	255	8.7%	98.1%
10	4,387	6,185	4,778	650	2,096	352	6.7%	96.7%
All	1,931	1,983	1,742	728	644	137	13.3%	97.5%
Poor*	714	193	142	601	70	11	22.0%	93.4%

PPP 0.9713

Share of Income and Income-Components received/paid by each Decile Group

Decile Group	Disposable Income	Original Income	of which Cur. Earned Inc.	All Benefits incl.Pub.Pen.	All Taxes	Social Ins. Contrib.	
1	5.3%	1.5%	1.3%	11.8%	1.6%	1.2%	
2	6.3%	2.5%	2.5%	12.9%	3.0%	2.9%	
3	7.0%	3.7%	3.8%	12.9%	4.2%	4.5%	
4	7.4%	5.3%	5.5%	11.2%	5.5%	6.2%	Poor: HH at risk of poverty
5	8.2%	7.1%	7.5%	10.2%	6.9%	8.0%	i.e. equ.disp.inc.< 60% of Median
6	9.0%	9.0%	9.6%	8.8%	8.3%	9.7%	(see also Legend)
7	10.1%	10.8%	11.6%	8.7%	10.4%	11.7%	
8	11.4%	13.5%	14.4%	7.2%	12.5%	14.0%	
9	13.4%	16.6%	17.5%	7.7%	16.2%	17.1%	
10	21.9%	30.0%	26.4%	8.6%	31.3%	24.7%	
Poor*	4.8%	1.3%	1.1%	10.8%	1.4%	1.0%	

original income employment income + investment income + maintenance payments + other regular primary income + property income + other private transfers + other regular cash payments + self-employment income + non taxable wage from abroad

taxes (sim.) national income tax + capital tax + church non-capital income tax + deposit interest taxation + local non-capital income tax (municipal taxation)

taxes (data) wealth or property taxes

employee sics (sim.) employee soc.ins.contrib. + employee sickness contrib.

benefits (sim.) housing benefit + home child care benefit + child benefit + lone parent child benefit + social assistance benefit

benefits (data) student payments + other irregular lump sum benefits + maternity payments + basic unemployment benefit + earnings related unemployment benefit + labour market support (an unemployment benefit) + military injury compensation + state pension income (ei) + pensioners housing benefit + national (basic) pension increases + sickness benefit + training subsidy for unemployed

FRANCE 1998

Mean of Income and Income-Components per Decile Group, EURO

Decile Group	Disposable Income	Original Income	of which Cur. Earned Inc.	All Benefits incl.Pub.Pen.	All Taxes	Social Ins. Contrib.	Simulated Benefits	Simulated Taxes
1	935	460	392	594	30	89	46.2%	21.0%
2	1,212	698	621	685	32	138	38.3%	26.9%
3	1,371	914	817	692	44	191	20.9%	36.2%
4	1,608	1,227	1,109	706	67	259	16.6%	44.6%
5	1,815	1,491	1,326	715	83	308	14.9%	49.1%
6	2,119	1,883	1,701	721	100	385	10.6%	51.9%
7	2,433	2,329	2,106	702	131	468	10.2%	58.1%
8	2,827	2,820	2,535	752	181	563	7.5%	65.5%
9	3,353	3,343	2,949	935	266	659	4.4%	72.2%
10	5,227	6,044	5,013	1,122	864	1,074	3.6%	88.7%
All	2,313	2,151	1,881	766	185	418	15.4%	73.3%
Poor*	977	483	415	618	30	94	43.3%	21.9%

Mean of Income and Income-Components per Decile Group, Euro adjusted for Purchasing Power Parities

Decile Group	Disposable Income	Original Income	of which Cur. Earned Inc.	All Benefits incl.Pub.Pen.	All Taxes	Social Ins. Contrib.	Simulated Benefits	Simulated Taxes
1	1,007	495	422	640	32	96	46.2%	21.0%
2	1,306	753	669	738	35	149	38.3%	26.9%
3	1,477	985	880	746	47	206	20.9%	36.2%
4	1,732	1,323	1,195	761	72	279	16.6%	44.6%
5	1,956	1,607	1,429	771	90	332	14.9%	49.1%
6	2,284	2,029	1,833	777	107	415	10.6%	51.9%
7	2,622	2,510	2,269	757	141	504	10.2%	58.1%
8	3,047	3,039	2,732	810	195	607	7.5%	65.5%
9	3,614	3,603	3,178	1,007	287	710	4.4%	72.2%
10	5,634	6,513	5,402	1,209	931	1,157	3.6%	88.7%
All	2,492	2,318	2,027	825	200	451	15.4%	73.3%
Poor*	1,053	520	447	666	32	101	43.3%	21.9%

PPP 0.9279

Share of Income and Income-Components received/paid by each Decile Group

Decile Group	Disposable Income	Original Income	of which Cur. Earned Inc.	All Benefits incl.Pub.Pen.	All Taxes	Social Ins. Contrib.	
1	3.9%	2.1%	2.0%	7.6%	1.6%	2.1%	
2	5.1%	3.2%	3.2%	8.7%	1.7%	3.2%	
3	6.2%	4.4%	4.5%	9.4%	2.5%	4.7%	
4	6.9%	5.7%	5.9%	9.2%	3.6%	6.2%	Poor: HH at risk of poverty
5	7.9%	7.0%	7.1%	9.4%	4.5%	7.4%	i.e. equ.disp.inc.< 60% of Median
6	9.0%	8.6%	8.9%	9.2%	5.3%	9.0%	(see also Legend)
7	10.3%	10.6%	10.9%	8.9%	6.9%	10.9%	
8	11.9%	12.7%	13.1%	9.5%	9.5%	13.1%	
9	14.6%	15.7%	15.8%	12.3%	14.5%	15.9%	
10	24.2%	30.1%	28.6%	15.7%	50.0%	27.5%	
Poor*	5.4%	2.9%	2.8%	10.3%	2.1%	2.9%	

original income employment income + investment income + maintenance payments + property income + other private transfers + self-employment income + secondary or temporary activity incomes (revenus d'activites secondaires ou occasionnelles) + payment to soldiers (compulsory military service) (solde des appeles) + participation bonus (prime de participation et interressement)

taxes (sim.) national income tax + capital income tax

taxes (data) local or regional taxes

employee sics (sim.) employee soc. ins. contrib. + soc.ins.contrib. on capital income + crds contrib. on unemployment benefits + csg contrib. on unemployment benefits + retrcomp contrib. on unemployment benefits + crds contrib. on employment income + csg contrib. on employment income + crds contrib. on various benefits + cottisation maladie contrib. on pension income + crds contrib. on pension income + csg contrib. on pension income

benefits (sim.) disabled benefit (allocation aux adultes handicapes) + family allowance (allocation familial) + young children allowance (allocation pour jeunes enfants) + education related family benefits (allocation de rentree scolaire) + education related family benefits (aide a la scolaire) + family complement (complement familial) + housing benefits (allocation lodgment) + lone parent benefit (allocation de parent isole) + minimum old age pension (minimum vieillesse) + minimum income (revenu minimum d'insertion)

benefits (data) student payments + other irregular lump sum benefits + social benefit for dependent elderly adults (aide aux personnes ages dependentes (originally apad)) + social benefit for special education (allocation d'education speciale...destinee aux enfants handicapes) + social benefit for parental education (allocation parental d'education) + social benefit for lone parents with certain characteristics (allocation de soutien familial) + invalidity pension + invalidity benefit + aide sociale + war pension + help for child guard (aide a la garde d'enfant) + unemployment compensation + pension benefits + alimony (pension de reversion) + pre-retirement pension

Mean of Income and Income-Components per Decile Group, EURO

Decile Group	Disposable Income	Original Income	of which Cur. Earned Inc.	All Benefits incl.Pub.Pen.	All Taxes	Social Ins. Contrib.	Simulated Benefits	Simulated Taxes
1	593	266	184	379	3	49	27.1%	100.0%
2	1,142	696	635	647	42	159	21.4%	100.0%
3	1,364	1,116	1,039	598	102	249	17.7%	100.0%
4	1,514	1,281	1,221	668	149	286	12.2%	100.0%
5	1,767	1,691	1,626	678	240	362	12.3%	100.0%
6	1,838	1,931	1,857	618	308	403	8.8%	100.0%
7	2,113	2,296	2,195	656	392	446	7.3%	100.0%
8	2,460	3,093	2,992	486	587	532	11.2%	100.0%
9	2,886	3,609	3,454	613	772	564	7.3%	100.0%
10	3,971	5,461	5,101	560	1,505	546	4.4%	100.0%
All	1,951	2,134	2,018	584	412	354	12.6%	100.0%
Poor*	647	294	217	417	6	58	25.1%	100.0%

Mean of Income and Income-Components per Decile Group, Euro adjusted for Purchasing Power Parities

Decile Group	Disposable Income	Original Income	of which Cur. Earned Inc.	All Benefits incl.Pub.Pen.	All Taxes	Social Ins. Contrib.	Simulated Benefits	Simulated Taxes
1	590	264	183	377	3	48	27.1%	100.0%
2	1,137	693	632	644	42	158	21.4%	100.0%
3	1,357	1,110	1,034	595	101	247	17.7%	100.0%
4	1,506	1,274	1,215	664	148	285	12.2%	100.0%
5	1,758	1,683	1,618	674	239	360	12.3%	100.0%
6	1,828	1,921	1,847	615	307	401	8.8%	100.0%
7	2,102	2,284	2,184	653	390	444	7.3%	100.0%
8	2,447	3,077	2,976	484	584	530	11.2%	100.0%
9	2,871	3,590	3,436	610	768	561	7.3%	100.0%
10	3,950	5,433	5,075	557	1,497	544	4.4%	100.0%
All	1,941	2,123	2,008	581	410	352	12.6%	100.0%
Poor*	644	293	216	415	6	57	25.1%	100.0%
						PPP	1.0052	

Share of Income and Income-Components received/paid by each Decile Group

Decile Group	Disposable Income	Original Income	of which Cur. Earned Inc.	All Benefits incl.Pub.Pen.	All Taxes	Social Ins. Contrib.	
1	3.8%	1.6%	1.2%	8.2%	0.1%	1.7%	
2	5.5%	3.1%	3.0%	10.4%	1.0%	4.2%	
3	6.5%	4.8%	4.8%	9.5%	2.3%	6.5%	
4	7.5%	5.8%	5.9%	11.1%	3.5%	7.8%	Poor: HH at risk of poverty
5	8.1%	7.1%	7.2%	10.4%	5.2%	9.2%	i.e. equ.disp.inc.< 60% of Median
6	9.5%	9.1%	9.3%	10.7%	7.5%	11.5%	(see also Legend)
7	10.8%	10.7%	10.8%	11.2%	9.4%	12.5%	
8	12.1%	13.9%	14.2%	8.0%	13.6%	14.4%	
9	14.6%	16.6%	16.8%	10.3%	18.4%	15.7%	
10	21.7%	27.3%	26.9%	10.2%	38.9%	16.5%	
Poor*	4.9%	2.0%	1.6%	10.6%	0.2%	2.4%	

original income employment income + investment income + maintenance payments + property income + private pension benefits + self-employment income

taxes (sim.) national income tax + solidarity surplus tax

employee sics (sim.) employee disability soc.ins.contrib. + employee health soc.ins.contrib. + employee pension soc.ins.contrib. + employee unemployment soc.ins.contrib.

benefits (sim.) housing benefit + child benefit + federal child raising benefit (bundeserziehungsgeld) + direct housing support (wohneigentumsfoerderung/eigenheimzulagengesetz) + post natal benefit for non-earning mothers (entbindungsgeld) + provincial child raising benefit (landeserziehungsgeld) + social assistance (sozialhilfe)

benefits (data) student payments + unemployment payment + unemployment benefit + retraining payment + old age transition payment + own old age pension + miners' own pension + civil servants' own pension + war victims' own pension + farmers' own pension + accident own pension + widow/orphan old-age pension + miners' widow/orphan pension + civil servants' widow/orphan pension + war victims' widow/orphan pension + farmers' widow/orphan pension + accident widow/orphan pension + nursing home insurance payment received (pflegeversicherung)

GREECE 1998

Mean of Income and Income-Components per Decile Group, EURO

Decile Group	Disposable Income	Original Income	of which Cur. Earned Inc.	All Benefits incl.Pub.Pen.	All Taxes	Social Ins. Contrib.	Simulated Benefits	Simulated Taxes
1	217	130	108	122	7	28	69.9%	100.0%
2	472	318	283	219	12	53	22.9%	100.0%
3	626	462	419	257	18	74	15.8%	100.0%
4	754	606	572	267	25	94	13.1%	100.0%
5	892	792	736	257	36	122	8.8%	100.0%
6	1,049	949	890	294	52	142	7.7%	100.0%
7	1,252	1,175	1,093	333	87	170	5.8%	100.0%
8	1,454	1,526	1,427	275	138	209	6.2%	100.0%
9	1,785	1,954	1,811	302	212	259	6.5%	100.0%
10	2,716	3,384	3,029	321	665	325	4.1%	100.0%
All	1,096	1,102	1,011	260	123	144	13.1%	100.0%
Poor*	337	220	190	166	9	40	41.7%	100.0%

Mean of Income and Income-Components per Decile Group, Euro adjusted for Purchasing Power Parities

Decile Group	Disposable Income	Original Income	of which Cur. Earned Inc.	All Benefits incl.Pub.Pen.	All Taxes	Social Ins. Contrib.	Simulated Benefits	Simulated Taxes
1	326	195	162	184	11	42	69.9%	100.0%
2	710	478	426	329	17	80	22.9%	100.0%
3	942	695	630	386	27	112	15.8%	100.0%
4	1,134	912	861	401	38	142	13.1%	100.0%
5	1,341	1,192	1,108	386	54	183	8.8%	100.0%
6	1,578	1,427	1,339	443	78	213	7.7%	100.0%
7	1,883	1,767	1,644	501	130	255	5.8%	100.0%
8	2,187	2,296	2,147	413	207	315	6.2%	100.0%
9	2,685	2,939	2,724	454	319	390	6.5%	100.0%
10	4,085	5,091	4,556	483	1,000	489	4.1%	100.0%
All	1,648	1,658	1,521	392	185	216	13.1%	100.0%
Poor*	507	331	285	250	14	60	41.7%	100.0%

PPP 0.6648

Share of Income and Income-Components received/paid by each Decile Group

Decile Group	Disposable Income	Original Income	of which Cur. Earned Inc.	All Benefits incl.Pub.Pen.	All Taxes	Social Ins. Contrib.	
1	2.4%	1.4%	1.3%	5.8%	0.7%	2.4%	
2	4.4%	2.9%	2.9%	8.6%	1.0%	3.8%	
3	5.7%	4.2%	4.1%	9.9%	1.5%	5.2%	
4	6.8%	5.4%	5.6%	10.1%	2.0%	6.5%	Poor: HH at risk of poverty
5	8.0%	7.1%	7.2%	9.7%	2.9%	8.3%	i.e. equ.disp.inc.< 60% of Median
6	9.0%	8.1%	8.3%	10.6%	4.0%	9.3%	(see also Legend)
7	10.5%	9.8%	9.9%	11.8%	6.5%	10.8%	
8	12.6%	13.2%	13.4%	10.0%	10.7%	13.9%	
9	15.5%	16.9%	17.1%	11.0%	16.4%	17.2%	
10	24.9%	30.9%	30.2%	12.4%	54.4%	22.7%	
Poor*	7.1%	4.6%	4.3%	14.7%	1.7%	6.4%	

original income employment income + investment income + maintenance payments + property income + other regular cash payments + self-employment income

taxes (sim.) national income tax

employee sics (sim.) civil servants soc.ins.contrib. + ika employee contrib. + farmer's sic + ika pensioner contrib. + scheme tebe(selfempl.)

benefits (sim.) oaed child allowance + large family benefit + third child benefit + unprotected child benefit + civil servant child allowance + farmer pension + social pension + ekas social solidarity benefit

benefits (data) student payments + housing benefits + maternity payments + disability benefit (non-contributory) + state pension + invalidity pension (contributory) + state survivor's pension + unemployment benefit

IRELAND 1998

Mean of Income and Income-Components per Decile Group, EURO

Decile Group	Disposable Income	Original Income	of which Cur. Earned Inc.	All Benefits incl.Pub.Pen.	All Taxes	Social Ins. Contrib.	Simulated Benefits	Simulated Taxes
1	715	53	40	664	1	1	99.3%	100.0%
2	725	150	109	581	3	3	98.9%	100.0%
3	1,057	391	332	694	18	11	99.5%	100.0%
4	1,394	962	834	543	79	33	98.8%	100.0%
5	1,838	1,627	1,488	469	197	61	97.4%	100.0%
6	2,108	2,143	1,992	320	270	85	96.8%	100.0%
7	2,381	2,562	2,409	309	385	104	97.2%	100.0%
8	2,706	3,149	3,019	225	539	128	97.1%	100.0%
9	3,069	3,856	3,679	145	772	160	96.6%	100.0%
10	4,724	6,295	5,778	95	1,439	228	97.8%	100.0%
All	2,051	2,097	1,945	410	375	80	98.5%	100.0%
Poor*	729	117	86	617	2	2	99.1%	100.0%

Mean of Income and Income-Components per Decile Group, Euro adjusted for Purchasing Power Parities

Decile Group	Disposable Income	Original Income	of which Cur. Earned Inc.	All Benefits incl.Pub.Pen.	All Taxes	Social Ins. Contrib.	Simulated Benefits	Simulated Taxes
1	820	61	46	760	1	1	99.3%	100.0%
2	831	172	125	665	4	3	98.9%	100.0%
3	1,210	448	380	795	20	13	99.5%	100.0%
4	1,597	1,102	955	623	90	38	98.8%	100.0%
5	2,105	1,864	1,704	537	226	70	97.4%	100.0%
6	2,415	2,454	2,281	367	309	97	96.8%	100.0%
7	2,728	2,935	2,760	354	441	120	97.2%	100.0%
8	3,100	3,607	3,458	258	618	147	97.1%	100.0%
9	3,516	4,417	4,214	166	884	183	96.6%	100.0%
10	5,411	7,211	6,619	108	1,648	261	97.8%	100.0%
All	2,350	2,402	2,228	469	429	92	98.5%	100.0%
Poor*	835	134	98	706	3	3	99.1%	100.0%

PPP 0.8730

Share of Income and Income-Components received/paid by each Decile Group

Decile Group	Disposable Income	Original Income	of which Cur. Earned Inc.	All Benefits incl.Pub.Pen.	All Taxes	Social Ins. Contrib.	
1	3.3%	0.2%	0.2%	15.3%	0.0%	0.1%	
2	5.2%	1.0%	0.8%	20.8%	0.1%	0.6%	
3	5.5%	2.0%	1.8%	18.0%	0.5%	1.5%	
4	6.2%	4.2%	3.9%	12.1%	1.9%	3.7%	Poor: HH at risk of poverty
5	7.2%	6.3%	6.2%	9.2%	4.3%	6.1%	i.e. equ.disp.inc.< 60% of Median
6	8.5%	8.5%	8.5%	6.5%	6.0%	8.8%	(see also Legend)
7	10.3%	10.9%	11.0%	6.7%	9.2%	11.6%	
8	12.2%	13.9%	14.4%	5.1%	13.3%	14.8%	
9	15.3%	18.8%	19.3%	3.6%	21.1%	20.4%	
10	26.2%	34.2%	33.8%	2.6%	43.7%	32.3%	
Poor*	9.1%	1.4%	1.1%	38.6%	0.2%	0.7%	

original income employment income + investment income + maintenance payments + other regular primary income + property income + private pension benefits + other private transfers + self-employment income

taxes (sim.) national income tax

employee sics (sim.) employee soc. ins. contrib.

benefits (sim.) housing benefit + blind persons non-contributory benefits + carer's non-contributory benefits + child benefit + short term disabled contributory benefits + long term disabled non-contributory benefits + occupational injury disablement contributory benefits + deserted wives non-contributory benefits + deserted wife contributory benefits + family income supplement + long term invalidity contributory benefits + occupational injury contributory pension + lone parent non-contributory benefits + long term unemployed non-contributory benefits + maternity contributory benefits + old age non-contributory benefits + old age contributory benefits + orphan's contributory benefits + pre-retirement non-contributory benefits + retirement contributory benefits + survivor's contributory benefits + short term unemployed non-contributory benefits + social minimum non-contributory benefits + unemployed contributory benefits + widow's non-contributory benefits

benefits (data) student payments + other irregular lump sum benefits + back to work allowance + other welfare allowances

ITALY 1998

Mean of Income and Income-Components per Decile Group, EURO

Decile Group	Disposable Income	Original Income	of which Cur. Earned Inc.	All Benefits incl.Pub.Pen.	All Taxes	Social Ins. Contrib.	Simulated Benefits	Simulated Taxes
1	543	402	311	242	65	36	47.1%	100.0%
2	792	465	408	430	63	40	38.8%	100.0%
3	1,061	786	701	459	117	67	35.4%	100.0%
4	1,268	1,024	911	513	180	89	23.0%	100.0%
5	1,481	1,317	1,159	529	250	114	13.6%	100.0%
6	1,762	1,581	1,374	635	319	135	10.2%	100.0%
7	2,074	2,025	1,764	629	406	173	8.8%	100.0%
8	2,349	2,388	2,037	663	503	199	7.9%	100.0%
9	2,926	3,188	2,707	706	695	273	3.5%	100.0%
10	5,239	6,272	4,674	960	1,538	456	1.5%	100.0%
All	1,981	1,982	1,633	583	422	161	14.4%	100.0%
Poor*	696	450	377	351	65	39	41.6%	100.0%

Mean of Income and Income-Components per Decile Group, Euro adjusted for Purchasing Power Parities

Decile Group	Disposable Income	Original Income	of which Cur. Earned Inc.	All Benefits incl.Pub.Pen.	All Taxes	Social Ins. Contrib.	Simulated Benefits	Simulated Taxes
1	677	502	388	302	81	45	47.1%	100.0%
2	988	580	509	536	78	50	38.8%	100.0%
3	1,323	981	875	573	146	84	35.4%	100.0%
4	1,582	1,278	1,137	640	224	111	23.0%	100.0%
5	1,848	1,643	1,447	660	312	143	13.6%	100.0%
6	2,199	1,973	1,714	792	398	169	10.2%	100.0%
7	2,588	2,526	2,201	784	507	216	8.8%	100.0%
8	2,931	2,979	2,541	827	627	248	7.9%	100.0%
9	3,651	3,977	3,377	880	867	340	3.5%	100.0%
10	6,536	7,826	5,832	1,198	1,919	569	1.5%	100.0%
All	2,472	2,472	2,038	727	527	201	14.4%	100.0%
Poor*	869	561	471	438	81	49	41.6%	100.0%

PPP 0.8015

Share of Income and Income-Components received/paid by each Decile Group

Decile Group	Disposable Income	Original Income	of which Cur. Earned Inc.	All Benefits incl.Pub.Pen.	All Taxes	Social Ins. Contrib.	
1	2.3%	1.7%	1.6%	3.4%	1.3%	1.9%	
2	4.4%	2.6%	2.7%	8.1%	1.6%	2.7%	
3	5.3%	3.9%	4.3%	7.8%	2.7%	4.1%	
4	6.3%	5.1%	5.5%	8.7%	4.2%	5.5%	Poor: HH at risk of poverty
5	7.6%	6.8%	7.2%	9.2%	6.0%	7.2%	i.e. equ.disp.inc.< 60% of Median
6	8.9%	8.0%	8.4%	10.9%	7.6%	8.4%	(see also Legend)
7	10.2%	10.0%	10.6%	10.6%	9.4%	10.5%	
8	12.2%	12.4%	12.9%	11.7%	12.3%	12.8%	
9	15.0%	16.3%	16.8%	12.3%	16.7%	17.2%	
10	27.7%	33.2%	30.0%	17.3%	38.2%	29.7%	
Poor*	7.0%	4.5%	4.6%	12.1%	3.1%	4.9%	

original income employment income + investment income + maintenance payments + property income + private pension benefits + other private transfers + self-employment income + fringe benefits

taxes (sim.) deposit tax + tax on dividends + national and local income tax (irpef) + tax on other bonds + tax on government bonds

employee sics (sim.) employee soc. ins. contrib.

benefits (sim.) family allowances for singles without children + family allowances for singles with children + family allowances for couples without children + family allowances for couples with children + suppl.pension paid on itpen1 + suppl.pension paid on itpen2 + suppl.pension paid on itpen3 + suppl.pension paid on itpen5 + suppl.pension paid on itpen6 + suppl.pension paid on itpen7 + suppl.pension paid on itpen8

benefits (data) student payments + soc.ins. unemployment cig + soc.ins. unemployment compensation + state disability non contributory pension + inail disability non contributory pension + soc.ins. unemployment mobility benefit + soc.security:national admin. + soc.security:regional admin. + soc.security:provincial admin. + soc.security:municipal admin. + soc.security:local health centre + soc.security:other local p.a. + soc.security:other private institutions + social pension (inps), retirement pension + other pension + foreign pension + state: widow`s pension

LUXEMBOURG 1998

Mean of Income and Income-Components per Decile Group, EURO

Decile Group	Disposable Income	Original Income	of which Cur. Earned Inc.	All Benefits incl.Pub.Pen.	All Taxes	Social Ins. Contrib.	Simulated Benefits	Simulated Taxes
1	1,516	858	829	792	5	128	47.4%	100.0%
2	1,977	1,163	1,115	1,007	25	168	27.8%	100.0%
3	2,257	1,513	1,448	993	45	204	20.3%	100.0%
4	2,471	1,661	1,571	1,114	85	220	15.4%	100.0%
5	2,725	1,734	1,625	1,352	135	226	11.0%	100.0%
6	3,303	2,528	2,416	1,335	247	313	13.5%	100.0%
7	3,494	3,218	3,050	1,060	406	379	11.9%	100.0%
8	4,068	4,000	3,738	1,130	619	443	10.9%	100.0%
9	4,747	5,279	4,910	1,056	1,055	533	10.6%	100.0%
10	7,042	9,792	8,340	930	2,898	782	9.1%	100.0%
All	3,423	3,277	2,991	1,078	585	347	16.4%	100.0%
Poor*	1,568	859	825	843	7	128	46.6%	100.0%

Mean of Income and Income-Components per Decile Group, Euro adjusted for Purchasing Power Parities

Decile Group	Disposable Income	Original Income	of which Cur. Earned Inc.	All Benefits incl.Pub.Pen.	All Taxes	Social Ins. Contrib.	Simulated Benefits	Simulated Taxes
1	1,500	849	820	783	5	127	47.4%	100.0%
2	1,956	1,150	1,103	996	24	166	27.8%	100.0%
3	2,233	1,497	1,432	982	45	201	20.3%	100.0%
4	2,445	1,644	1,554	1,102	84	218	15.4%	100.0%
5	2,696	1,716	1,608	1,337	134	223	11.0%	100.0%
6	3,268	2,501	2,391	1,320	244	309	13.5%	100.0%
7	3,457	3,184	3,017	1,049	402	374	11.9%	100.0%
8	4,024	3,957	3,698	1,118	613	438	10.9%	100.0%
9	4,696	5,223	4,858	1,045	1,044	527	10.6%	100.0%
10	6,967	9,688	8,251	921	2,868	774	9.1%	100.0%
All	3,387	3,242	2,960	1,066	579	343	16.4%	100.0%
Poor*	1,551	850	817	834	7	126	46.6%	100.0%

PPP 1.0108

Share of Income and Income-Components received/paid by each Decile Group

Decile Group	Disposable Income	Original Income	of which Cur. Earned Inc.	All Benefits incl.Pub.Pen.	All Taxes	Social Ins. Contrib.	
1	4.1%	2.4%	2.6%	6.9%	0.1%	3.5%	
2	5.3%	3.3%	3.5%	8.7%	0.4%	4.5%	
3	6.3%	4.4%	4.7%	8.9%	0.7%	5.6%	
4	7.4%	5.2%	5.3%	10.5%	1.5%	6.5%	Poor: HH at risk of poverty
5	8.4%	5.6%	5.7%	13.2%	2.4%	6.8%	i.e. equ.disp.inc.< 60% of Median
6	9.1%	7.2%	7.6%	11.6%	4.0%	8.5%	(see also Legend)
7	10.6%	10.2%	10.6%	10.2%	7.2%	11.3%	
8	11.9%	12.2%	12.5%	10.5%	10.6%	12.8%	
9	14.2%	16.5%	16.8%	10.0%	18.5%	15.7%	
10	22.6%	32.9%	30.7%	9.5%	54.6%	24.8%	
Poor*	4.9%	2.8%	3.0%	8.4%	0.1%	4.0%	

original income employment income + investment income + maintenance payments + property income + other private transfers + self-employment income + income from apprenticeship

taxes (sim.) national income tax

employee sics (sim.) self-employed contrib. to disability insurance + employee health soc.ins.contrib. + self-employed contrib. to health insurance + employee pension soc.ins.contrib. + self-employed contrib. to pension insurance + self-employed (non-farmers) family benefits contrib.

benefits (sim.) child benefit (family benefit) + prenatal-; postnatal-; and child birth allowance (allocation prenatale; allocation postnatale; allocation de naissance) + education allowance (allocation d'éducation) + housing benefit + handicapped child benefit (allocation speciale supplementaire) + maternity allowance (allocation de maternité) + social assistance (minimum income) + annual beginning of school allowance (allocation de rentrée scolaire) + seriously disabled persons (allocation speciale pour personnes handicapés)

benefits (data) student payments + maternity payments + care benefits + other benefits from the fonds national de solidarité (fns) + orphan allowance + other public benefits + permanent accident benefit + disability pension + early retirement pension + pension received from employment in private sector (includes any occupational pension, etc.) + pension received from employment in public sector (includes any occupational pension, etc.) + private sector reversion pension + public sector reversion pension + unemployment benefit

NETHERLANDS 1998

Mean of Income and Income-Components per Decile Group, EURO

Decile Group	Disposable Income	Original Income	of which Cur. Earned Inc.	All Benefits incl.Pub.Pen.	All Taxes	Social Ins. Contrib.	Simulated Benefits	Simulated Taxes
1	773	338	287	593	29	130	66.6%	100.0%
2	1,034	538	450	734	40	197	79.6%	100.0%
3	1,247	889	724	682	58	266	73.5%	100.0%
4	1,554	1,523	1,289	510	101	378	63.8%	100.0%
5	1,809	1,943	1,675	479	144	469	59.4%	100.0%
6	2,048	2,417	2,198	376	191	554	54.3%	100.0%
7	2,267	2,850	2,540	318	272	629	50.7%	100.0%
8	2,354	2,996	2,631	290	275	658	64.7%	100.0%
9	2,787	3,644	3,020	353	489	720	61.5%	100.0%
10	3,800	5,680	4,634	316	1,363	833	52.6%	100.0%
All	1,971	2,291	1,945	471	311	480	65.7%	100.0%
Poor*	773	337	287	594	29	130	66.7%	100.0%

Mean of Income and Income-Components per Decile Group, Euro adjusted for Purchasing Power Parities

Decile Group	Disposable Income	Original Income	of which Cur. Earned Inc.	All Benefits incl.Pub.Pen.	All Taxes	Social Ins. Contrib.	Simulated Benefits	Simulated Taxes
1	849	371	316	652	31	142	66.6%	100.0%
2	1,137	592	495	807	44	217	79.6%	100.0%
3	1,371	978	796	749	64	292	73.5%	100.0%
4	1,708	1,674	1,417	560	111	415	63.8%	100.0%
5	1,989	2,135	1,841	527	158	515	59.4%	100.0%
6	2,251	2,657	2,416	413	210	609	54.3%	100.0%
7	2,491	3,132	2,791	350	299	691	50.7%	100.0%
8	2,587	3,293	2,892	319	302	723	64.7%	100.0%
9	3,063	4,004	3,319	388	538	791	61.5%	100.0%
10	4,177	6,243	5,093	347	1,498	916	52.6%	100.0%
All	2,166	2,517	2,138	517	341	527	65.7%	100.0%
Poor*	850	371	315	653	31	142	66.7%	100.0%

PPP 0.9099

Share of Income and Income-Components received/paid by each Decile Group

Decile Group	Disposable Income	Original Income	of which Cur. Earned Inc.	All Benefits incl.Pub.Pen.	All Taxes	Social Ins. Contrib.	
1	4.3%	1.6%	1.6%	13.7%	1.0%	2.9%	
2	6.0%	2.7%	2.6%	17.8%	1.5%	4.7%	
3	6.7%	4.1%	3.9%	15.3%	2.0%	5.9%	
4	7.1%	6.0%	6.0%	9.8%	2.9%	7.1%	Poor: HH at risk of poverty
5	8.0%	7.4%	7.5%	8.9%	4.0%	8.5%	i.e. equ.disp.inc.< 60% of Median
6	8.8%	8.9%	9.5%	6.7%	5.2%	9.7%	(see also Legend)
7	10.1%	10.9%	11.4%	5.9%	7.7%	11.5%	
8	12.4%	13.6%	14.0%	6.4%	9.2%	14.2%	
9	14.6%	16.5%	16.1%	7.8%	16.3%	15.5%	
10	22.1%	28.4%	27.3%	7.7%	50.2%	19.9%	
Poor*	4.3%	1.6%	1.6%	13.8%	1.0%	2.9%	

original income employment income + investment income + maintenance payments + other regular primary income + property income + private pension benefits + other private transfers + self-employment income

original income (sim.) earnings transfer paid on income from work

taxes (sim.) national income tax

employee sics (sim.) self-employed contrib. to disability insurance + employee health soc.ins.contrib. + employee pension soc.ins.contrib. + employee unemployment soc.ins.contrib.

benefits (sim.) housing benefit + earnings transfer paid on benefit income + dutch child benefit + ioaw-sab: for unemployed aged 50-64 and disabled unemployed younger than 64 with children) + general social assistance for families with children - amount to be subtracted to get to exact disposable income + ioaw-sab: for unemployed aged 50-64 and disabled unemployed younger than 64 without children) + general social assistance for families w/o children + state pension + survivors' benefit (anw) (formerly widow benefit)

benefits (data) student payments + basic disability benefit (aaw) + disability insurance (former civil servants) + general social assistance, self-employed (ubz) + dutch disability insurance (wao) + unemployment benefit for civil servants + unemployment benefit(ww) + sickness insurance (zw)

PORTUGAL 1998

Mean of Income and Income-Components per Decile Group, EURO

Decile Group	Disposable Income	Original Income	of which Cur. Earned Inc.	All Benefits incl.Pub.Pen.	All Taxes	Social Ins. Contrib.	Simulated Benefits	Simulated Taxes
1	277	97	88	189	1	8	34.6%	100.0%
2	405	220	210	214	5	23	9.7%	100.0%
3	550	372	360	227	10	39	13.4%	100.0%
4	711	593	580	205	25	62	8.9%	100.0%
5	845	768	752	198	42	80	7.8%	100.0%
6	1,000	967	953	195	58	103	7.7%	100.0%
7	1,089	1,064	1,034	219	86	108	5.0%	100.0%
8	1,361	1,376	1,324	256	137	135	4.8%	100.0%
9	1,709	1,904	1,835	259	273	182	5.0%	100.0%
10	2,817	3,480	3,214	443	789	318	2.6%	100.0%
All	1,069	1,078	1,027	242	146	105	9.3%	100.0%
Poor*	350	170	161	201	4	17	21.4%	100.0%

Mean of Income and Income-Components per Decile Group, Euro adjusted for Purchasing Power Parities

Decile Group	Disposable Income	Original Income	of which Cur. Earned Inc.	All Benefits incl.Pub.Pen.	All Taxes	Social Ins. Contrib.	Simulated Benefits	Simulated Taxes
1	429	151	137	293	2	13	34.6%	100.0%
2	626	340	324	330	8	36	9.7%	100.0%
3	851	576	557	351	16	60	13.4%	100.0%
4	1,100	918	897	316	38	96	8.9%	100.0%
5	1,307	1,189	1,163	307	65	123	7.8%	100.0%
6	1,547	1,495	1,475	301	90	159	7.7%	100.0%
7	1,685	1,647	1,599	338	133	167	5.0%	100.0%
8	2,105	2,129	2,048	397	212	208	4.8%	100.0%
9	2,643	2,946	2,839	400	422	281	5.0%	100.0%
10	4,358	5,384	4,972	685	1,220	491	2.6%	100.0%
All	1,654	1,668	1,589	374	226	162	9.3%	100.0%
Poor*	542	263	249	310	6	26	21.4%	100.0%

PPP 0.6464

Share of Income and Income-Components received/paid by each Decile Group

Decile Group	Disposable Income	Original Income	of which Cur. Earned Inc.	All Benefits incl.Pub.Pen.	All Taxes	Social Ins. Contrib.	
1	3.2%	1.1%	1.1%	9.8%	0.1%	1.0%	
2	4.2%	2.3%	2.3%	9.8%	0.4%	2.5%	
3	4.9%	3.3%	3.4%	9.0%	0.7%	3.6%	
4	5.9%	4.9%	5.0%	7.5%	1.5%	5.3%	Poor: HH at risk of poverty
5	7.2%	6.4%	6.6%	7.4%	2.6%	6.9%	i.e. equ.disp.inc.< 60% of Median
6	8.4%	8.0%	8.3%	7.2%	3.6%	8.8%	(see also Legend)
7	10.1%	9.8%	10.0%	9.0%	5.8%	10.2%	
8	12.1%	12.2%	12.3%	10.1%	8.9%	12.3%	
9	15.3%	16.9%	17.1%	10.3%	17.9%	16.7%	
10	28.6%	35.0%	33.9%	19.9%	58.5%	32.9%	
Poor*	8.3%	4.0%	4.0%	21.1%	0.6%	4.1%	

original income employment income + investment income + maintenance payments + property income + other regular cash payments + self-employment income

taxes (sim.) capital income taxes + income tax

employee sics (sim.) employee soc.ins.contrib. + self-employed soc.ins.contrib.

benefits (sim.) child benefits + income supplement to ensure minimum income

benefits (data) student payments + housing benefits + unemployment related benefits + old-age insurance (rgss) + old-age agric.insurance (ressa) + survivors related benefits + sickness/invalidity benefits + family benefits + social assistance

SPAIN 1998

Mean of Income and Income-Components per Decile Group, EURO

Decile Group	Disposable Income	Original Income	of which Cur. Earned Inc.	All Benefits incl.Pub.Pen.	All Taxes	Social Ins. Contrib.	Simulated Benefits	Simulated Taxes
1	400	212	190	222	0	34	37.0%	100.0%
2	641	350	330	336	8	38	19.0%	100.0%
3	720	396	374	379	18	37	20.8%	100.0%
4	972	655	632	423	48	57	11.4%	100.0%
5	1,123	825	794	439	76	65	8.6%	100.0%
6	1,323	1,100	1,048	419	116	80	7.5%	100.0%
7	1,581	1,447	1,409	420	180	106	7.3%	100.0%
8	1,884	1,818	1,760	462	273	123	5.5%	100.0%
9	2,234	2,402	2,337	404	422	150	3.6%	100.0%
10	3,318	4,148	3,989	390	1,024	196	1.3%	100.0%
All	1,422	1,338	1,289	390	219	88	10.8%	100.0%
Poor*	506	259	239	283	3	33	26.8%	100.0%

Mean of Income and Income-Components per Decile Group, Euro adjusted for Purchasing Power Parities

Decile Group	Disposable Income	Original Income	of which Cur. Earned Inc.	All Benefits incl.Pub.Pen.	All Taxes	Social Ins. Contrib.	Simulated Benefits	Simulated Taxes
1	545	289	259	303	0	46	37.0%	100.0%
2	873	477	450	458	11	51	19.0%	100.0%
3	982	540	509	517	25	50	20.8%	100.0%
4	1,325	892	861	576	66	78	11.4%	100.0%
5	1,530	1,125	1,082	598	104	89	8.6%	100.0%
6	1,803	1,498	1,427	571	158	109	7.5%	100.0%
7	2,154	1,971	1,919	572	245	144	7.3%	100.0%
8	2,566	2,476	2,398	630	372	168	5.5%	100.0%
9	3,044	3,272	3,184	551	575	204	3.6%	100.0%
10	4,521	5,651	5,434	532	1,395	267	1.3%	100.0%
All	1,937	1,823	1,756	532	299	120	10.8%	100.0%
Poor*	689	353	325	385	4	45	26.8%	100.0%
							PPP	0.7340

Share of Income and Income-Components received/paid by each Decile Group

Decile Group	Disposable Income	Original Income	of which Cur. Earned Inc.	All Benefits incl.Pub.Pen.	All Taxes	Social Ins. Contrib.	
1	2.5%	1.4%	1.3%	5.0%	0.0%	3.4%	
2	4.6%	2.7%	2.6%	8.9%	0.4%	4.4%	
3	6.1%	3.5%	3.5%	11.6%	1.0%	5.0%	
4	6.9%	5.0%	5.0%	11.0%	2.2%	6.6%	Poor: HH at risk of poverty
5	7.8%	6.1%	6.1%	11.1%	3.4%	7.3%	i.e. equ.disp.inc.< 60% of Median
6	8.9%	7.9%	7.8%	10.3%	5.1%	8.7%	(see also Legend)
7	10.5%	10.2%	10.4%	10.2%	7.8%	11.4%	
8	12.4%	12.7%	12.8%	11.1%	11.7%	13.1%	
9	15.5%	17.6%	17.8%	10.2%	18.9%	16.7%	
10	24.7%	32.8%	32.8%	10.6%	49.5%	23.5%	
Poor*	6.2%	3.4%	3.2%	12.6%	0.2%	6.6%	

original income employment income + investment income + maintenance payments + property income + other regular cash payments + self-employment income

taxes (sim.) national income tax

employee sics (sim.) agrarian employment soc.ins.contrib. + agrarian self employment soc.ins.contrib. + partime eesic + general employee sic's + partime eesic + self-employed sic's + sic's for the unemployed

benefits (sim.) child social assistance + old age social assistance + old age pension supplement + unemployed social assistance for those with family charges + widow pension supplement

benefits (data) student payments + housing benefits + unemployment insurance benefit + old-age (insurance an early retirement) + survivors (widows or orphans, insurance) + benefit 4: sickness and invalidity benefits + social assistance benefits (household social assistance, but not including child benefit) + family benefits

Mean of Income and Income-Components per Decile Group, EURO

Decile Group	Disposable Income	Original Income	of which Cur. Earned Inc.	All Benefits incl.Pub.Pen.	All Taxes	Social Ins. Contrib.	Simulated Benefits	Simulated Taxes
1	318	217	183	224	103	20	16.3%	100.0%
2	960	460	371	784	246	38	25.8%	100.0%
3	1,052	392	310	924	231	33	36.2%	100.0%
4	1,295	858	713	933	428	67	20.5%	100.0%
5	1,536	1,444	1,284	782	586	104	13.2%	100.0%
6	1,771	1,916	1,734	695	706	133	15.1%	100.0%
7	1,946	2,299	2,098	609	805	156	12.4%	100.0%
8	2,170	2,745	2,483	541	939	176	11.4%	100.0%
9	2,628	3,542	3,158	510	1,212	212	10.9%	100.0%
10	4,691	6,481	4,438	493	2,052	230	9.3%	100.0%
All	1,708	1,846	1,519	638	669	107	19.6%	100.0%
Poor*	382	249	208	274	119	22	16.4%	100.0%

Mean of Income and Income-Components per Decile Group, Euro adjusted for Purchasing Power Parities

Decile Group	Disposable Income	Original Income	of which Cur. Earned Inc.	All Benefits incl.Pub.Pen.	All Taxes	Social Ins. Contrib.	Simulated Benefits	Simulated Taxes
1	296	202	170	208	96	18	16.3%	100.0%
2	893	428	345	729	228	35	25.8%	100.0%
3	979	365	288	860	214	31	36.2%	100.0%
4	1,205	798	663	868	398	63	20.5%	100.0%
5	1,429	1,343	1,194	727	545	97	13.2%	100.0%
6	1,648	1,782	1,613	646	657	124	15.1%	100.0%
7	1,810	2,138	1,951	566	749	145	12.4%	100.0%
8	2,018	2,553	2,310	503	873	164	11.4%	100.0%
9	2,445	3,295	2,937	474	1,128	197	10.9%	100.0%
10	4,364	6,028	4,128	458	1,908	214	9.3%	100.0%
All	1,589	1,717	1,413	593	622	100	19.6%	100.0%
Poor*	355	232	193	255	110	21	16.4%	100.0%

PPP 1.08

Share of Income and Income-Components received/paid by each Decile Group

Decile Group	Disposable Income	Original Income	of which Cur. Earned Inc.	All Benefits incl.Pub.Pen.	All Taxes	Social Ins. Contrib.	
1	2.7%	1.7%	1.8%	5.1%	2.2%	2.7%	
2	6.0%	2.7%	2.6%	13.2%	3.9%	3.8%	
3	7.3%	2.5%	2.4%	17.3%	4.1%	3.7%	
4	7.4%	4.5%	4.6%	14.2%	6.2%	6.1%	Poor: HH at risk of poverty
5	8.1%	7.0%	7.6%	11.0%	7.8%	8.7%	i.e. equ.disp.inc.< 60% of Median
6	8.8%	8.8%	9.6%	9.2%	8.9%	10.5%	(see also Legend)
7	10.1%	11.0%	12.2%	8.4%	10.6%	12.9%	
8	11.5%	13.5%	14.8%	7.7%	12.7%	15.0%	
9	13.4%	16.7%	18.1%	7.0%	15.8%	17.3%	
10	24.7%	31.5%	26.2%	6.9%	27.5%	19.3%	
Poor*	3.8%	2.3%	2.3%	7.2%	3.0%	3.5%	

original income employment income + investment income + maintenance payments + private pension benefits + self-employment income

taxes (sim.) real estate taxation + net tax on investment + local income taxes - tax reduction due to negative tax on investment income + net national income tax + net tax on wealth

employee sics (sim.) general pension fee

benefits (sim.) child benefits + housing benefits + housing benefit supplement for pensioners + parental allowance + social assistance

benefits (data) sick benefits + unemployment benefits total + resid. tax free educational benefits + residual tax-free benefits + university grants + other taxable pensions + non-taxable pension + study grants for high school

UK 1998

Mean of Income and Income-Components per Decile Group, EURO

Decile Group	Disposable Income	Original Income	of which Cur. Earned Inc.	All Benefits incl.Pub.Pen.	All Taxes	Social Ins. Contrib.	Simulated Benefits	Simulated Taxes
1	740	152	86	653	61	4	69.7%	-1.1%
2	940	314	231	717	77	13	63.3%	19.8%
3	1,073	466	311	722	96	19	48.6%	34.6%
4	1,355	957	747	608	162	48	40.6%	57.9%
5	1,663	1,446	1,153	531	236	78	30.6%	70.5%
6	2,007	2,006	1,706	442	324	117	33.8%	77.4%
7	2,300	2,529	2,189	343	422	150	29.9%	82.5%
8	2,648	3,132	2,713	245	541	188	21.6%	85.4%
9	3,247	4,085	3,676	169	761	245	26.2%	88.7%
10	4,938	6,617	5,606	142	1,519	302	23.3%	93.7%
All	2,098	2,180	1,849	459	424	116	45.0%	82.7%
Poor*	841	234	160	684	69	8	66.4%	10.7%

Mean of Income and Income-Components per Decile Group, Euro adjusted for Purchasing Power Parities

Decile Group	Disposable Income	Original Income	of which Cur. Earned Inc.	All Benefits incl.Pub.Pen.	All Taxes	Social Ins. Contrib.	Simulated Benefits	Simulated Taxes
1	793	163	93	699	65	4	69.7%	-1.1%
2	1,007	336	248	768	83	14	63.3%	19.8%
3	1,149	499	333	774	103	21	48.6%	34.6%
4	1,451	1,025	800	651	174	51	40.6%	57.9%
5	1,781	1,549	1,235	569	253	83	30.6%	70.5%
6	2,150	2,149	1,827	474	347	126	33.8%	77.4%
7	2,463	2,708	2,345	367	452	160	29.9%	82.5%
8	2,837	3,355	2,906	262	579	202	21.6%	85.4%
9	3,478	4,375	3,937	181	816	262	26.2%	88.7%
10	5,289	7,087	6,005	152	1,627	324	23.3%	93.7%
All	2,248	2,335	1,980	492	454	125	45.0%	82.7%
Poor*	901	251	172	733	74	9	66.4%	10.7%
							PPP	0.9336

Share of Income and Income-Components received/paid by each Decile Group

Decile Group	Disposable Income	Original Income	of which Cur. Earned Inc.	All Benefits incl.Pub.Pen.	All Taxes	Social Ins. Contrib.	
1	3.4%	0.7%	0.5%	13.8%	1.4%	0.3%	
2	4.5%	1.5%	1.3%	15.8%	1.9%	1.1%	
3	5.7%	2.4%	1.9%	17.4%	2.5%	1.8%	
4	6.5%	4.4%	4.1%	13.4%	3.9%	4.2%	Poor: HH at risk of poverty
5	7.6%	6.4%	6.0%	11.2%	5.4%	6.5%	i.e. equ.disp.inc.< 60% of Median
6	8.9%	8.5%	8.6%	8.9%	7.1%	9.4%	(see also Legend)
7	10.5%	11.1%	11.3%	7.1%	9.5%	12.3%	
8	12.5%	14.3%	14.6%	5.3%	12.6%	16.1%	
9	15.3%	18.5%	19.6%	3.6%	17.7%	20.8%	
10	25.0%	32.3%	32.3%	3.3%	38.1%	27.7%	
Poor*	7.9%	2.1%	1.7%	29.5%	3.2%	1.4%	

original income employment income + investment income + maintenance payments + other regular primary income + property income + private pension benefits + other private transfers + other regular cash payments + self-employment income + value of luncheon vouchers

taxes (sim.) national income tax

taxes (data) local taxation

employee sics (sim.) employee soc. ins. contrib.

benefits (sim.) housing benefit + job seekers allowance (contributory unemployment benefit) + child benefit + council tax benefit + family credit + income support

benefits (data) student payments + maternity payments + attendance allowance + disability living allowance (self care) + disability working allowance + invalid care allowance + incapacity benefit + industrial injury + mobility allowance (now disability living allowance (mobility)) + retirement pension + severe disablement allowance + state earnings related pension (serps) + statutory sick pay + training allowance + war pension + widow benefit

ALL COUNTRIES ("EU-15-LAND") 1998

Mean of Income and Income-Components per Decile Group, EURO

Decile Group	Disposable Income	Original Income	of which Cur. Earned Inc.	All Benefits inc.Pub.Pen.	All Taxes	Social Ins. Contr.	Simulated Benefits	Simulated Taxes
1	530	315	266	275	25	34	37.1%	87.7%
2	917	522	464	511	60	56	41.7%	74.6%
3	1,112	674	592	612	87	87	35.2%	80.1%
4	1,335	970	853	635	131	140	30.1%	88.4%
5	1,583	1,309	1,181	661	191	196	21.8%	91.9%
6	1,842	1,732	1,578	641	273	258	19.3%	93.7%
7	2,069	2,130	1,950	605	356	309	15.5%	94.8%
8	2,436	2,761	2,533	550	490	385	14.5%	95.3%
9	2,922	3,513	3,215	538	674	455	12.5%	95.9%
10	4,474	5,797	4,961	639	1,378	584	6.6%	97.0%
Total Mean	1,965	2,034	1,813	570	381	257	22.1%	94.8%
Poor*	727	420	366	395	43	45	40.0%	78.4%

Mean of Income and Income-Components per Decile Group, Euro adjusted for Purchasing Power Parities

Decile Group	Disposable Income	Original Income	of which Cur. Earned Inc.	All Benefits inc.Pub.Pen.	All Taxes	Social Ins. Contr.	Simulated Benefits	Simulated Taxes
1	607	331	272	345	32	37	41.0%	82.3%
2	995	542	479	581	65	63	40.3%	74.4%
3	1,225	746	657	682	100	103	34.5%	84.0%
4	1,452	1,083	962	676	148	159	28.5%	89.6%
5	1,691	1,457	1,323	665	212	218	20.4%	92.7%
6	1,950	1,842	1,681	668	291	269	16.9%	93.9%
7	2,216	2,311	2,114	614	384	326	15.3%	94.7%
8	2,589	2,968	2,734	544	519	404	13.8%	95.2%
9	3,102	3,694	3,377	570	686	476	11.2%	95.6%
10	4,749	6,122	5,241	658	1,422	609	6.5%	96.7%
Total Mean	2,088	2,153	1,921	602	397	270	22.0%	94.6%
Poor*	766	413	353	444	45	46	41.0%	77.1%

Share of Income and Income-Components received/paid by each Decile Group

Decile Group	Disposable Income	Original Income	of which Cur. Earned Inc.	All Benefits inc.Pub.Pen.	All Taxes	Social Ins. Contr.	
1	2.5%	1.4%	1.4%	4.5%	0.6%	1.2%	
2	4.4%	2.4%	2.4%	8.5%	1.5%	2.0%	
3	5.7%	3.4%	3.3%	10.9%	2.3%	3.5%	
4	6.9%	4.8%	4.8%	11.3%	3.5%	5.5%	Poor: HH at risk of poverty
5	7.9%	6.3%	6.4%	11.5%	4.9%	7.5%	i.e. equ.disp.inc.< 60% of Median
6	9.1%	8.3%	8.4%	10.9%	6.9%	9.8%	(see also Legend)
7	10.7%	10.6%	10.9%	10.7%	9.4%	12.2%	
8	12.5%	13.7%	14.1%	9.7%	12.9%	15.1%	
9	15.3%	17.7%	18.2%	9.7%	18.1%	18.2%	
10	25.0%	31.3%	30.1%	12.3%	39.7%	25.0%	
Poor*	6.9%	3.9%	3.8%	13.0%	2.1%	3.3%	

Share of Income and Income-Components received/paid by each Decile Group, based on PPP

Decile Group	Disposable Income	Original Income	Cur. Earned Income	Benefits incl.Pub.Pen.	Taxes	Social Ins. Contr.
1	2.8%	1.5%	1.4%	5.5%	0.8%	1.3%
2	4.7%	2.5%	2.5%	9.6%	1.6%	2.3%
3	5.9%	3.5%	3.5%	11.5%	2.6%	3.9%
4	6.9%	5.0%	5.0%	11.2%	3.7%	5.9%
5	8.0%	6.6%	6.8%	10.9%	5.2%	7.9%
6	9.1%	8.3%	8.5%	10.8%	7.1%	9.7%
7	10.5%	10.6%	10.9%	10.1%	9.6%	12.0%
8	12.3%	13.7%	14.1%	9.0%	13.0%	14.8%
9	15.0%	17.4%	17.8%	9.6%	17.5%	17.8%
10	24.6%	30.8%	29.5%	11.8%	38.8%	24.4%
Poor*	6.3%	3.3%	3.2%	12.7%	1.9%	3.0%

HOUSEHOLD COMPOSITION 1998

AUSTRIA

Household Average Number of ...

Share of ...

Decile Group	...Persons	...Children	...Working Age (WA)	...Elderly	...WA Econ. Act.	...% WA Econ. Act.	...Persons	...Children	...Working Age (WA)	...Elderly	...WA Econ. Act.
1	2.03	0.52	0.94	0.57	0.44	29.4%	10%	11.3%	7.6%	17.1%	5.0%
2	2.65	0.83	1.32	0.51	0.74	40.0%	10%	13.7%	8.1%	11.7%	6.4%
3	2.60	0.82	1.30	0.48	0.78	42.4%	10%	14.0%	8.3%	11.2%	6.9%
4	2.61	0.77	1.37	0.47	0.87	48.6%	10%	12.9%	8.6%	10.8%	7.6%
5	2.70	0.73	1.68	0.30	1.21	65.0%	10%	11.9%	10.3%	6.8%	10.4%
6	2.50	0.53	1.55	0.42	1.19	63.8%	10%	9.4%	10.2%	10.1%	10.9%
7	2.52	0.42	1.72	0.37	1.29	65.8%	10%	7.4%	11.2%	9.1%	11.8%
8	2.59	0.50	1.83	0.26	1.49	75.0%	10%	8.5%	11.6%	6.1%	13.2%
9	2.29	0.32	1.69	0.29	1.38	73.9%	10%	6.1%	12.1%	7.6%	13.8%
10	2.22	0.24	1.64	0.35	1.33	70.7%	10%	4.8%	12.2%	9.6%	13.9%
All	2.45	0.56	1.49	0.40	1.06	57.2%	100%	100.0%	100.0%	100.0%	100.0%
Poor	2.05	0.53	0.94	0.58	0.44	29.6%	10.7%	12.2%	8.0%	18.3%	5.3%
% of Population	100.0%	22.7%	60.9%	16.4%	43.4%						

BELGIUM

Household Average Number of ...

Share of ...

Decile Group	...Persons	...Children	...Working Age (WA)	...Elderly	...WA Econ. Act.	...% WA Econ. Act.	...Persons	...Children	...Working Age (WA)	...Elderly	...WA Econ. Act.
1	1.93	0.38	0.86	0.69	0.21	13.5%	10%	7.8%	7.4%	24.0%	2.6%
2	2.24	0.60	1.06	0.59	0.45	27.1%	10%	10.5%	7.9%	17.6%	4.8%
3	2.28	0.61	1.21	0.46	0.70	39.2%	10%	10.6%	8.8%	13.5%	7.2%
4	2.48	0.70	1.34	0.44	0.93	51.3%	10%	11.1%	9.0%	12.0%	8.8%
5	2.70	0.81	1.59	0.31	1.12	57.5%	10%	11.9%	9.8%	7.6%	9.8%
6	2.68	0.76	1.64	0.29	1.33	69.1%	10%	11.1%	10.2%	7.2%	11.7%
7	2.75	0.68	1.85	0.22	1.44	73.4%	10%	9.8%	11.3%	5.3%	12.4%
8	2.65	0.67	1.82	0.17	1.56	80.2%	10%	9.9%	11.4%	4.2%	13.8%
9	2.70	0.65	1.92	0.12	1.63	82.9%	10%	9.5%	11.9%	3.1%	14.2%
10	2.48	0.48	1.80	0.20	1.54	78.4%	10%	7.8%	12.2%	5.4%	14.7%
All	2.46	0.62	1.47	0.37	1.04	54.9%	100%	100.0%	100.0%	100.0%	100.0%
Poor	1.93	0.38	0.85	0.69	0.21	13.7%	11.0%	8.7%	8.1%	26.6%	2.9%
% of Population	100.0%	25.3%	59.9%	14.9%	42.5%						

DENMARK

Household Average Number of ...

Share of ...

Decile Group	...Persons	...Children	...Working Age (WA)	...Elderly	...WA Econ. Act.	...% WA Econ. Act.	...Persons	...Children	...Working Age (WA)	...Elderly	...WA Econ. Act.
1	1.62	0.21	0.85	0.56	0.42	31.6%	10%	5.2%	8.4%	26.0%	5.1%
2	1.80	0.30	0.67	0.82	0.31	21.6%	10%	6.8%	6.0%	34.7%	3.5%
3	2.02	0.53	1.04	0.45	0.57	34.4%	10%	10.6%	8.3%	16.9%	5.7%
4	2.41	0.79	1.40	0.23	1.00	61.1%	10%	13.3%	9.4%	7.1%	8.3%
5	2.59	0.84	1.59	0.16	1.35	76.6%	10%	13.2%	9.9%	4.6%	10.4%
6	2.65	0.90	1.63	0.13	1.46	84.0%	10%	13.7%	9.9%	3.6%	11.1%
7	2.68	0.76	1.85	0.06	1.66	88.6%	10%	11.6%	11.2%	1.8%	12.5%
8	2.50	0.63	1.81	0.06	1.68	90.8%	10%	10.2%	11.6%	1.8%	13.4%
9	2.46	0.52	1.85	0.08	1.74	90.4%	10%	8.6%	12.1%	2.6%	14.2%
10	2.41	0.41	1.98	0.02	1.91	95.4%	10%	6.8%	13.2%	0.7%	15.9%
All	2.25	0.56	1.40	0.30	1.12	63.2%	100%	100.0%	100.0%	100.0%	100.0%
Poor	1.62	0.21	0.84	0.58	0.41	30.8%	10.6%	5.4%	8.8%	28.6%	5.3%
% of Population	100.0%	24.6%	62.2%	13.2%	50.0%						

Definitions (see also Legend):

Children: persons aged 18 or younger

Working Age: persons aged between 19 and 64 (both included)

Elderly: persons aged 65 or older

Working Aged Economically Active: working aged persons having employment or self-employment income

% of Working Aged Economically Active: share of working aged persons in household who are economically active

Poor: households at risk of being in poverty, i.e. with equalised disposable income below 60% of median

Decile groups are formed by ranking according to equalised household disposable income using the modified

OECD-equivalence-scale and weighted by household size

HOUSEHOLD COMPOSITION 1998

FINLAND

Household Average Number of ...

Share of ...

Decile Group	...Persons	...Children	...Working Age (WA)	...Elderly	...WA Econ. Act.	...% WA Econ. Act.	...Persons	...Children	...Working Age (WA)	...Elderly	...WA Econ. Act.
1	1.53	0.29	0.91	0.34	0.46	33.8%	10%	7.8%	9.6%	15.5%	6.0%
2	1.90	0.46	0.94	0.51	0.57	36.2%	10%	10.0%	8.0%	18.5%	6.0%
3	2.04	0.53	1.00	0.51	0.70	44.3%	10%	11.0%	7.9%	17.5%	6.8%
4	2.35	0.67	1.24	0.44	0.97	59.8%	10%	12.0%	8.5%	12.9%	8.2%
5	2.39	0.68	1.38	0.32	1.10	66.8%	10%	12.0%	9.4%	9.4%	9.2%
6	2.42	0.66	1.49	0.27	1.32	78.0%	10%	11.4%	10.0%	7.8%	10.9%
7	2.42	0.62	1.60	0.20	1.41	81.2%	10%	10.7%	10.7%	5.9%	11.6%
8	2.38	0.56	1.69	0.14	1.54	87.0%	10%	9.8%	11.4%	4.1%	12.9%
9	2.35	0.45	1.76	0.14	1.61	86.4%	10%	8.1%	12.1%	4.0%	13.7%
10	2.25	0.38	1.73	0.14	1.64	88.9%	10%	7.0%	12.5%	4.4%	14.6%
All	2.16	0.51	1.34	0.31	1.08	63.7%	100%	100.0%	100.0%	100.0%	100.0%
Poor	1.51	0.28	0.89	0.34	0.45	33.2%	9.2%	7.2%	8.8%	14.2%	5.4%
% of Population	100.0%	23.8%	61.8%	14.4%	50.0%						

FRANCE

Household Average Number of ...

Share of ...

Decile Group	...Persons	...Children	...Working Age (WA)	...Elderly	...WA Econ. Act.	...% WA Econ. Act.	...Persons	...Children	...Working Age (WA)	...Elderly	...WA Econ. Act.
1	2.52	0.73	1.46	0.33	0.61	32.5%	10%	11.5%	9.7%	8.6%	5.9%
2	2.53	0.80	1.25	0.48	0.66	36.3%	10%	12.6%	8.3%	12.3%	6.4%
3	2.37	0.63	1.27	0.47	0.75	40.8%	10%	10.6%	9.0%	12.8%	7.8%
4	2.46	0.66	1.36	0.44	0.91	50.9%	10%	10.7%	9.3%	11.5%	9.1%
5	2.44	0.63	1.38	0.42	0.97	55.0%	10%	10.3%	9.6%	11.3%	9.8%
6	2.51	0.62	1.50	0.39	1.12	60.4%	10%	9.8%	10.1%	10.1%	11.0%
7	2.52	0.61	1.63	0.29	1.23	65.7%	10%	9.6%	10.9%	7.5%	12.0%
8	2.54	0.58	1.66	0.30	1.29	66.8%	10%	9.1%	11.0%	7.7%	12.5%
9	2.44	0.51	1.57	0.37	1.24	65.2%	10%	8.2%	10.8%	9.7%	12.5%
10	2.30	0.45	1.55	0.31	1.21	66.2%	10%	7.7%	11.3%	8.6%	13.0%
All	2.46	0.62	1.46	0.38	1.00	54.0%	100%	100.0%	100.0%	100.0%	100.0%
Poor	2.50	0.73	1.37	0.41	0.60	32.0%	13.0%	15.0%	12.0%	13.7%	7.7%
% of Population	100.0%	25.2%	59.4%	15.4%	40.6%						

GERMANY

Household Average Number of ...

Share of ...

Decile Group	...Persons	...Children	...Working Age (WA)	...Elderly	...WA Econ. Act.	...% WA Econ. Act.	...Persons	...Children	...Working Age (WA)	...Elderly	...WA Econ. Act.
1	1.65	0.40	0.89	0.36	0.38	29.2%	10%	11.7%	8.6%	13.0%	4.8%
2	2.21	0.68	1.13	0.40	0.62	37.6%	10%	15.0%	8.2%	10.8%	5.9%
3	2.23	0.61	1.16	0.46	0.80	47.5%	10%	13.2%	8.2%	12.3%	7.5%
4	2.16	0.50	1.21	0.44	0.87	48.6%	10%	11.4%	9.0%	12.4%	8.6%
5	2.31	0.55	1.37	0.40	1.01	57.4%	10%	11.6%	9.4%	10.2%	9.1%
6	2.07	0.40	1.27	0.39	1.02	63.5%	10%	9.5%	9.8%	11.2%	10.4%
7	2.09	0.32	1.42	0.35	1.17	65.9%	10%	7.5%	10.8%	9.9%	11.8%
8	2.16	0.34	1.60	0.22	1.41	78.0%	10%	7.6%	11.7%	6.0%	13.6%
9	2.13	0.30	1.58	0.25	1.37	74.2%	10%	6.8%	12.0%	7.1%	13.6%
10	1.95	0.22	1.49	0.23	1.36	78.8%	10%	5.5%	12.2%	7.1%	14.6%
All	2.08	0.43	1.30	0.35	0.99	57.6%	100%	100.0%	100.0%	100.0%	100.0%
Poor	1.68	0.41	0.91	0.37	0.39	28.7%	12.0%	14.1%	10.3%	15.6%	5.8%
% of Population	100.0%	20.5%	62.7%	16.7%	47.5%						

Definitions (see also Legend):

Children: persons aged 18 or younger

Working Age: persons aged between 19 and 64 (both included)

Elderly: persons aged 65 or older

Working Aged Economically Active: working aged persons having employment or self-employment income

% of Working Aged Economically Active: share of working aged persons in household who are economically active

Poor: households at risk of being in poverty, i.e. with equalised disposable income below 60% of median

Decile groups are formed by ranking according to equalised household disposable income using the modified

OECD-equivalence-scale and weighted by household size

HOUSEHOLD COMPOSITION 1998

GREECE

Household Average Number of ...

Share of ...

Decile Group	...Persons	...Children	...Working Age (WA)	...Elderly	...WA Econ. Act.	...% WA Econ. Act.	...Persons	...Children	...Working Age (WA)	...Elderly	...WA Econ. Act.
1	2.30	0.41	1.08	0.81	0.38	18.9%	10%	7.8%	7.9%	19.9%	5.1%
2	2.78	0.58	1.51	0.69	0.55	26.3%	10%	9.2%	9.1%	14.1%	6.1%
3	2.82	0.61	1.55	0.66	0.65	29.2%	10%	9.5%	9.2%	13.2%	7.0%
4	2.88	0.72	1.60	0.56	0.78	34.1%	10%	11.0%	9.4%	11.1%	8.3%
5	2.87	0.67	1.71	0.50	0.90	39.9%	10%	10.2%	10.0%	9.8%	9.6%
6	3.01	0.73	1.84	0.44	0.98	43.0%	10%	10.7%	10.2%	8.2%	10.0%
7	3.08	0.70	1.97	0.41	1.08	48.3%	10%	10.0%	10.7%	7.5%	10.7%
8	2.99	0.74	1.95	0.30	1.26	60.1%	10%	10.9%	11.0%	5.8%	13.0%
9	2.97	0.76	1.96	0.25	1.42	69.5%	10%	11.3%	11.1%	4.7%	14.6%
10	2.82	0.61	1.94	0.27	1.45	72.6%	10%	9.5%	11.5%	5.5%	15.8%
All	2.83	0.65	1.69	0.50	0.93	43.4%	100%	100.0%	100.0%	100.0%	100.0%
Poor	2.52	0.49	1.28	0.75	0.46	22.6%	20.5%	17.5%	17.4%	34.6%	11.5%
% of Population	100.0%	22.8%	59.6%	17.6%	32.6%						

IRELAND

Household Average Number of ...

Share of ...

Decile Group	...Persons	...Children	...Working Age (WA)	...Elderly	...WA Econ. Act.	...% WA Econ. Act.	...Persons	...Children	...Working Age (WA)	...Elderly	...WA Econ. Act.
1	3.30	1.68	1.54	0.07	0.08	3.5%	10%	15.5%	8.2%	1.9%	0.7%
2	2.18	0.71	0.83	0.64	0.16	7.6%	10%	10.1%	6.9%	26.0%	2.3%
3	2.98	0.84	1.26	0.88	0.35	16.9%	10%	8.7%	7.6%	25.9%	3.8%
4	3.46	1.13	1.80	0.52	0.76	37.2%	10%	10.1%	9.3%	13.2%	6.9%
5	3.92	1.47	2.08	0.37	1.15	52.3%	10%	11.6%	9.5%	8.2%	9.3%
6	3.80	1.34	2.16	0.30	1.38	63.0%	10%	10.9%	10.1%	6.9%	11.5%
7	3.55	1.09	2.21	0.25	1.43	64.5%	10%	9.5%	11.1%	6.2%	12.8%
8	3.40	0.98	2.26	0.16	1.66	75.9%	10%	8.8%	11.8%	4.2%	15.5%
9	3.08	0.79	2.16	0.13	1.77	84.4%	10%	7.9%	12.5%	3.6%	18.2%
10	2.79	0.62	2.05	0.12	1.67	80.1%	10%	6.9%	13.1%	3.9%	19.0%
All	3.16	1.02	1.77	0.36	1.00	46.6%	100%	100.0%	100.0%	100.0%	100.0%
Poor	2.60	1.05	1.08	0.47	0.13	6.0%	21.1%	26.2%	15.7%	33.2%	3.3%
% of Population	100.0%	32.4%	56.1%	11.5%	31.6%						

ITALY

Household Average Number of ...

Share of ...

Decile Group	...Persons	...Children	...Working Age (WA)	...Elderly	...WA Econ. Act.	...% WA Econ. Act.	...Persons	...Children	...Working Age (WA)	...Elderly	...WA Econ. Act.
1	3.45	0.99	2.20	0.25	0.63	28.0%	10%	14.2%	10.0%	4.4%	5.2%
2	2.65	0.62	1.46	0.57	0.51	21.5%	10%	11.7%	8.8%	13.3%	5.5%
3	2.92	0.71	1.62	0.59	0.66	28.8%	10%	12.2%	8.8%	12.2%	6.5%
4	2.92	0.69	1.67	0.57	0.79	36.4%	10%	11.7%	9.0%	11.8%	7.8%
5	2.84	0.56	1.78	0.50	0.93	40.8%	10%	9.8%	9.9%	10.7%	9.4%
6	2.89	0.53	1.81	0.55	1.04	46.7%	10%	9.1%	9.9%	11.7%	10.4%
7	2.95	0.57	1.93	0.45	1.24	56.6%	10%	9.6%	10.3%	9.3%	12.1%
8	2.80	0.41	1.96	0.42	1.31	60.0%	10%	7.3%	11.0%	9.2%	13.5%
9	2.85	0.41	2.02	0.42	1.45	66.4%	10%	7.2%	11.2%	8.9%	14.6%
10	2.76	0.39	1.98	0.39	1.45	66.9%	10%	7.1%	11.3%	8.6%	15.1%
All	2.89	0.58	1.83	0.47	1.01	45.4%	100%	100.0%	100.0%	100.0%	100.0%
Poor	2.99	0.78	1.78	0.44	0.57	24.5%	20.8%	26.9%	19.4%	18.5%	11.3%
% of Population	100.0%	20.0%	63.5%	16.4%	34.9%						

Definitions (see also Legend):

Children: persons aged 18 or younger

Working Age: persons aged between 19 and 64 (both included)

Elderly: persons aged 65 or older

Working Aged Economically Active: working aged persons having employment or self-employment income

% of Working Aged Economically Active: share of working aged persons in household who are economically active

Poor: households at risk of being in poverty, i.e. with equalised disposable income below 60% of median

Decile groups are formed by ranking according to equalised household disposable income using the modified

OECD-equivalence-scale and weighted by household size

HOUSEHOLD COMPOSITION 1998

LUXEMBOURG

Household Average Number of ...

Share of ...

Decile Group	...Persons	...Children	...Working Age (WA)	...Elderly	...WA Econ. Act.	...% WA Econ. Act.	...Persons	...Children	...Working Age (WA)	...Elderly	...WA Econ. Act.
1	2.69	0.91	1.50	0.28	0.76	44.8%	10%	14.5%	8.9%	7.0%	6.9%
2	2.75	0.82	1.48	0.45	0.76	41.0%	10%	13.0%	8.7%	11.0%	6.9%
3	2.63	0.75	1.54	0.35	0.87	47.0%	10%	12.2%	9.4%	8.8%	8.2%
4	2.50	0.63	1.43	0.44	0.88	46.4%	10%	10.9%	9.3%	11.8%	8.7%
5	2.41	0.54	1.31	0.56	0.80	41.4%	10%	9.8%	8.8%	15.5%	8.2%
6	2.70	0.58	1.63	0.48	0.97	48.4%	10%	9.4%	9.8%	11.9%	9.0%
7	2.44	0.48	1.62	0.34	1.10	61.4%	10%	8.5%	10.7%	9.4%	11.2%
8	2.53	0.48	1.64	0.42	1.18	61.1%	10%	8.2%	10.4%	11.0%	11.7%
9	2.46	0.44	1.75	0.27	1.32	68.2%	10%	7.7%	11.4%	7.4%	13.3%
10	2.31	0.31	1.79	0.21	1.46	77.8%	10%	5.8%	12.5%	6.2%	15.8%
All	2.53	0.59	1.57	0.38	1.02	54.2%	100%	100.0%	100.0%	100.0%	100.0%
Poor	2.73	0.95	1.47	0.31	0.74	43.1%	11.6%	17.4%	10.1%	8.9%	7.8%
% of Population	100.0%	23.1%	62.0%	14.9%	40.2%						

NETHERLANDS

Household Average Number of ...

Share of ...

Decile Group	...Persons	...Children	...Working Age (WA)	...Elderly	...WA Econ. Act.	...% WA Econ. Act.	...Persons	...Children	...Working Age (WA)	...Elderly	...WA Econ. Act.
1	2.07	0.62	1.26	0.19	0.49	35.4%	10%	12.3%	9.7%	6.9%	5.2%
2	1.97	0.50	0.92	0.55	0.48	31.4%	10%	10.4%	7.4%	21.2%	5.3%
3	2.14	0.56	1.06	0.52	0.61	35.5%	10%	10.8%	7.9%	18.6%	6.4%
4	2.49	0.78	1.38	0.33	0.91	51.1%	10%	12.7%	8.9%	10.0%	8.1%
5	2.60	0.75	1.56	0.29	1.11	60.0%	10%	11.7%	9.6%	8.7%	9.5%
6	2.68	0.87	1.62	0.20	1.30	72.1%	10%	13.2%	9.7%	5.6%	10.8%
7	2.58	0.70	1.73	0.15	1.38	74.9%	10%	11.1%	10.7%	4.4%	11.9%
8	2.18	0.40	1.58	0.20	1.34	75.3%	10%	7.4%	11.6%	7.2%	13.7%
9	2.18	0.32	1.59	0.27	1.34	72.1%	10%	6.1%	11.7%	9.3%	13.6%
10	1.97	0.21	1.55	0.21	1.37	76.9%	10%	4.4%	12.6%	8.1%	15.5%
All	2.26	0.55	1.41	0.30	1.02	57.7%	100%	100.0%	100.0%	100.0%	100.0%
Poor	2.07	0.62	1.26	0.19	0.49	35.3%	10.0%	12.3%	9.7%	7.1%	5.2%
% of Population	100.0%	24.6%	62.4%	13.1%	45.0%						

PORTUGAL

Household Average Number of ...

Share of ...

Decile Group	...Persons	...Children	...Working Age (WA)	...Elderly	...WA Econ. Act.	...% WA Econ. Act.	...Persons	...Children	...Working Age (WA)	...Elderly	...WA Econ. Act.
1	2.47	0.58	1.22	0.66	0.46	24.2%	10%	9.9%	8.1%	18.3%	4.7%
2	2.78	0.66	1.34	0.78	0.55	25.0%	10%	10.0%	7.8%	19.1%	5.0%
3	3.22	1.07	1.52	0.62	0.89	41.8%	10%	14.0%	7.7%	13.2%	6.9%
4	3.47	0.95	2.15	0.38	1.36	55.1%	10%	11.4%	10.1%	7.4%	9.8%
5	3.40	0.82	2.18	0.41	1.37	57.7%	10%	10.0%	10.4%	8.1%	10.0%
6	3.46	0.86	2.24	0.36	1.70	68.7%	10%	10.5%	10.6%	7.2%	12.3%
7	3.11	0.66	2.10	0.35	1.55	66.7%	10%	8.9%	10.9%	7.7%	12.4%
8	3.25	0.67	2.26	0.32	1.69	68.8%	10%	8.6%	11.4%	6.8%	13.0%
9	3.20	0.64	2.30	0.26	1.67	68.9%	10%	8.3%	11.6%	5.5%	13.0%
10	2.87	0.58	2.00	0.28	1.47	70.7%	10%	8.5%	11.4%	6.8%	12.9%
All	3.09	0.74	1.90	0.45	1.24	53.5%	100%	100.0%	100.0%	100.0%	100.0%
Poor	2.67	0.67	1.29	0.71	0.53	26.1%	22.0%	23.0%	17.3%	39.9%	11.0%
% of Population	100.0%	23.9%	61.4%	14.7%	40.0%						

Definitions (see also Legend):

Children: persons aged 18 or younger

Working Age: persons aged between 19 and 64 (both included)

Elderly: persons aged 65 or older

Working Aged Economically Active: working aged persons having employment or self-employment income

% of Working Aged Economically Active: share of working aged persons in household who are economically active

Poor: households at risk of being in poverty, i.e. with equalised disposable income below 60% of median

Decile groups are formed by ranking according to equalised household disposable income using the modified

OECD-equivalence-scale and weighted by household size

HOUSEHOLD COMPOSITION 1998

SPAIN

Household Average Number of ...

Share of ...

Decile Group	...Persons	...Children	...Working Age (WA)	...Elderly	...WA Econ. Act.	...% WA Econ. Act.	...Persons	...Children	...Working Age (WA)	...Elderly	...WA Econ. Act.
1	3.55	1.03	2.25	0.27	0.62	26.0%	10%	13.5%	10.2%	4.7%	5.2%
2	3.07	0.72	1.65	0.70	0.63	27.3%	10%	10.9%	8.7%	13.9%	6.2%
3	2.63	0.55	1.40	0.69	0.60	24.2%	10%	9.7%	8.6%	15.8%	6.8%
4	3.11	0.59	1.85	0.67	0.83	32.4%	10%	8.8%	9.6%	13.1%	8.0%
5	3.19	0.69	1.80	0.70	0.89	36.6%	10%	10.1%	9.1%	13.2%	8.4%
6	3.28	0.65	2.02	0.60	1.09	43.1%	10%	9.2%	9.9%	11.2%	10.0%
7	3.33	0.59	2.26	0.49	1.37	54.4%	10%	8.2%	10.9%	8.9%	12.4%
8	3.36	0.63	2.30	0.43	1.44	59.3%	10%	8.7%	11.0%	7.7%	12.9%
9	3.21	0.70	2.18	0.34	1.51	68.3%	10%	10.1%	11.0%	6.4%	14.2%
10	2.98	0.70	2.03	0.26	1.58	77.4%	10%	10.9%	11.0%	5.3%	16.0%
All	3.15	0.68	1.95	0.52	1.05	44.7%	100%	100.0%	100.0%	100.0%	100.0%
Poor	3.27	0.85	1.91	0.51	0.60	25.7%	18.1%	21.9%	17.1%	17.2%	10.0%
% of Population	100.0%	21.5%	62.0%	16.5%	33.3%						

SWEDEN

Household Average Number of ...

Share of ...

Decile Group	...Persons	...Children	...Working Age (WA)	...Elderly	...WA Econ. Act.	...% WA Econ. Act.	...Persons	...Children	...Working Age (WA)	...Elderly	...WA Econ. Act.
1	1.22	0.26	0.82	0.15	0.52	46.8%	10%	9.4%	11.2%	6.6%	8.6%
2	1.67	0.41	0.69	0.57	0.45	33.1%	10%	10.7%	7.0%	18.9%	5.5%
3	1.50	0.32	0.68	0.50	0.39	31.2%	10%	9.5%	7.6%	18.5%	5.3%
4	1.83	0.52	0.87	0.45	0.63	48.6%	10%	12.5%	8.0%	13.5%	7.0%
5	2.00	0.57	1.03	0.39	0.91	66.7%	10%	12.5%	8.8%	10.9%	9.3%
6	2.11	0.62	1.19	0.31	1.08	73.9%	10%	12.8%	9.5%	8.2%	10.3%
7	2.03	0.50	1.29	0.24	1.19	80.5%	10%	10.8%	10.7%	6.6%	11.9%
8	1.97	0.40	1.36	0.21	1.27	83.0%	10%	8.9%	11.7%	5.9%	13.1%
9	2.05	0.35	1.52	0.18	1.44	85.7%	10%	7.4%	12.6%	4.9%	14.3%
10	1.99	0.25	1.52	0.21	1.46	84.3%	10%	5.6%	12.9%	6.0%	14.8%
All	1.79	0.41	1.06	0.32	0.88	60.8%	100%	100.0%	100.0%	100.0%	100.0%
Poor	1.26	0.27	0.80	0.19	0.51	45.7%	11.9%	11.2%	12.7%	10.1%	9.8%
% of Population	100.0%	22.8%	59.2%	18.0%	49.3%						

UK

Household Average Number of ...

Share of ...

Decile Group	...Persons	...Children	...Working Age (WA)	...Elderly	...WA Econ. Act.	...% WA Econ. Act.	...Persons	...Children	...Working Age (WA)	...Elderly	...WA Econ. Act.
1	2.41	0.89	1.14	0.37	0.19	10.6%	10%	15.0%	7.9%	10.2%	2.0%
2	2.31	0.79	1.08	0.44	0.30	17.6%	10%	13.9%	7.7%	12.7%	3.3%
3	2.12	0.54	0.97	0.61	0.31	18.8%	10%	10.4%	7.6%	19.0%	3.8%
4	2.32	0.58	1.22	0.51	0.64	37.5%	10%	10.2%	8.8%	14.7%	7.1%
5	2.43	0.63	1.35	0.45	0.83	47.2%	10%	10.5%	9.2%	12.3%	8.7%
6	2.53	0.64	1.54	0.34	1.13	60.6%	10%	10.3%	10.1%	9.0%	11.4%
7	2.46	0.53	1.66	0.27	1.28	67.2%	10%	8.7%	11.2%	7.2%	13.3%
8	2.36	0.46	1.69	0.22	1.42	76.4%	10%	7.9%	11.8%	6.1%	15.3%
9	2.38	0.44	1.78	0.16	1.57	82.6%	10%	7.5%	12.4%	4.3%	16.8%
10	2.21	0.30	1.76	0.15	1.59	85.4%	10%	5.5%	13.2%	4.5%	18.4%
All	2.35	0.58	1.42	0.35	0.92	50.1%	100%	100.0%	100.0%	100.0%	100.0%
Poor	2.36	0.84	1.11	0.41	0.24	14.2%	19.9%	28.9%	15.5%	22.8%	5.3%
% of Population	100.0%	24.6%	60.3%	15.1%	39.2%						

Definitions (see also Legend):

Children: persons aged 18 or younger

Working Age: persons aged between 19 and 64 (both included)

Elderly: persons aged 65 or older

Working Aged Economically Active: working aged persons having employment or self-employment income

% of Working Aged Economically Active: share of working aged persons in household who are economically active

Poor: households at risk of being in poverty, i.e. with equalised disposable income below 60% of median

Decile groups are formed by ranking according to equalised household disposable income using the modified

OECD-equivalence-scale and weighted by household size

HOUSEHOLD COMPOSITION 1998

ALL COUNTRIES ("EU-15-LAND")

Household Average Number of ...

Share of ...

Decile Group	...Persons	...Children	...Working Age (WA)	...Elderly	...WA Econ. Act.	...% WA Econ. Act.	...Persons	...Children	...Working Age (WA)	...Elderly	...WA Econ. Act.
1	2.64	0.68	1.51	0.46	0.55	27.4%	10.0%	11.3%	9.3%	10.9%	5.2%
2	2.59	0.68	1.43	0.48	0.60	29.5%	10.0%	11.6%	9.0%	11.7%	5.7%
3	2.41	0.60	1.29	0.51	0.62	32.4%	10.0%	11.1%	8.7%	13.4%	6.4%
4	2.41	0.61	1.32	0.49	0.75	40.3%	10.0%	11.1%	8.9%	12.8%	7.6%
5	2.48	0.62	1.41	0.46	0.91	48.7%	10.0%	11.0%	9.2%	11.6%	9.1%
6	2.52	0.62	1.50	0.39	1.06	57.5%	10.0%	10.9%	9.7%	9.9%	10.3%
7	2.41	0.53	1.53	0.36	1.17	64.1%	10.0%	9.6%	10.3%	9.3%	11.9%
8	2.43	0.49	1.67	0.27	1.34	71.5%	10.0%	8.8%	11.2%	7.0%	13.6%
9	2.39	0.44	1.70	0.25	1.42	74.9%	10.0%	8.1%	11.6%	6.6%	14.7%
10	2.22	0.33	1.65	0.24	1.41	76.4%	10.0%	6.5%	12.1%	6.9%	15.6%
All	2.45	0.56	1.50	0.39	0.99	52.9%	100.0%	100.0%	100.0%	100.0%	100.0%
Poor	2.61	0.68	1.47	0.47	0.58	28.4%	20.1%	22.9%	18.4%	22.7%	10.9%
% of Pop-ulation	100.0%	22.7%	61.5%	15.8%	40.7%						

ALL COUNTRIES ("EU-15-LAND"), Decile Groups Based on PPP-Adjusted Income

Household Average Number of ...

Share of ...

Decile Group	...Persons	...Children	...Working Age (WA)	...Elderly	...WA Econ. Act.	...% WA Econ. Act.	...Persons	...Children	...Working Age (WA)	...Elderly	...WA Econ. Act.
1	2.56	0.67	1.46	0.43	0.50	26.6%	10.0%	11.6%	9.3%	10.5%	4.8%
2	2.45	0.65	1.32	0.48	0.55	28.0%	10.0%	11.7%	8.7%	12.4%	5.5%
3	2.42	0.61	1.27	0.54	0.62	32.7%	10.0%	11.2%	8.5%	14.1%	6.3%
4	2.45	0.61	1.34	0.50	0.78	41.6%	10.0%	11.0%	8.9%	12.8%	7.9%
5	2.49	0.61	1.44	0.44	0.95	50.9%	10.0%	10.9%	9.4%	11.1%	9.4%
6	2.51	0.58	1.53	0.40	1.07	57.4%	10.0%	10.1%	9.9%	10.1%	10.5%
7	2.47	0.54	1.58	0.34	1.21	65.4%	10.0%	9.7%	10.4%	8.8%	12.0%
8	2.46	0.49	1.71	0.26	1.37	72.7%	10.0%	8.8%	11.3%	6.7%	13.7%
9	2.41	0.44	1.72	0.25	1.42	74.0%	10.0%	8.0%	11.6%	6.6%	14.5%
10	2.26	0.36	1.66	0.25	1.41	76.2%	10.0%	6.9%	11.9%	6.9%	15.4%
All	2.45	0.56	1.50	0.39	0.99	52.9%	100.0%	100.0%	100.0%	100.0%	100.0%
Poor	2.51	0.66	1.39	0.46	0.52	26.9%	17.7%	20.6%	15.9%	20.4%	8.9%
% of Pop-ulation	100.0%	22.7%	61.5%	15.8%	40.7%						

Definitions (see also Legend):

Children: persons aged 18 or younger

Working Age: persons aged between 19 and 64 (both included)

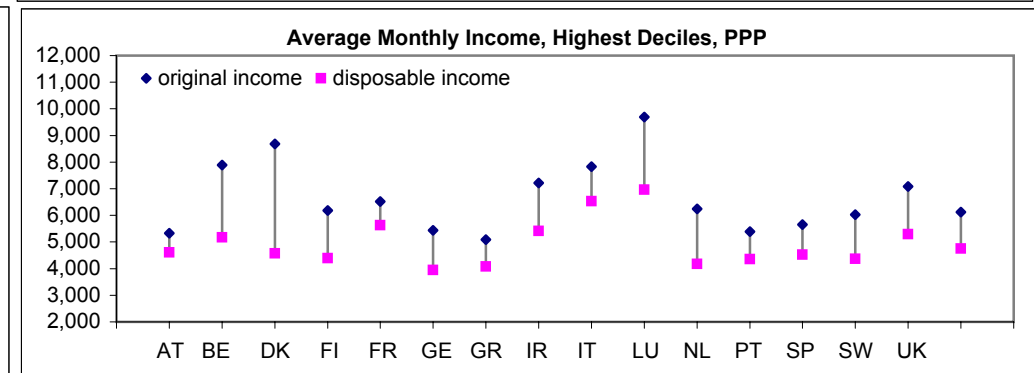
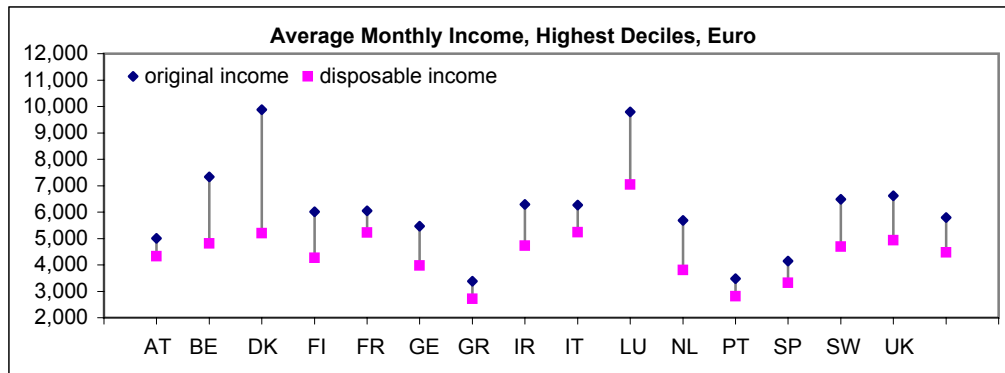
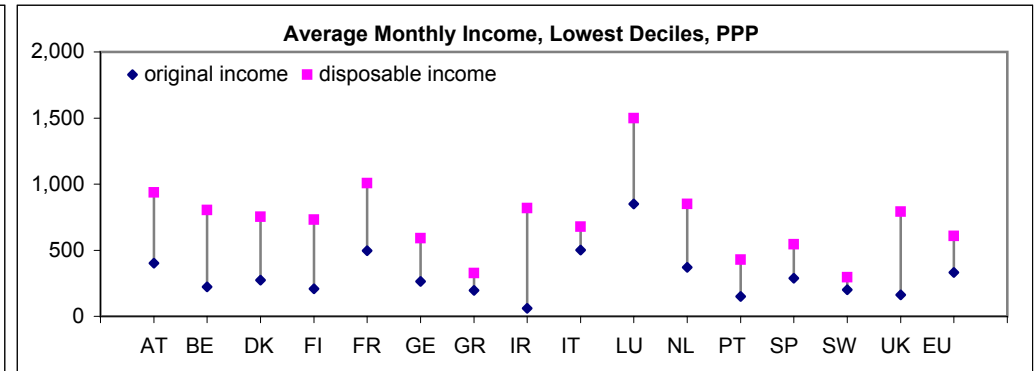
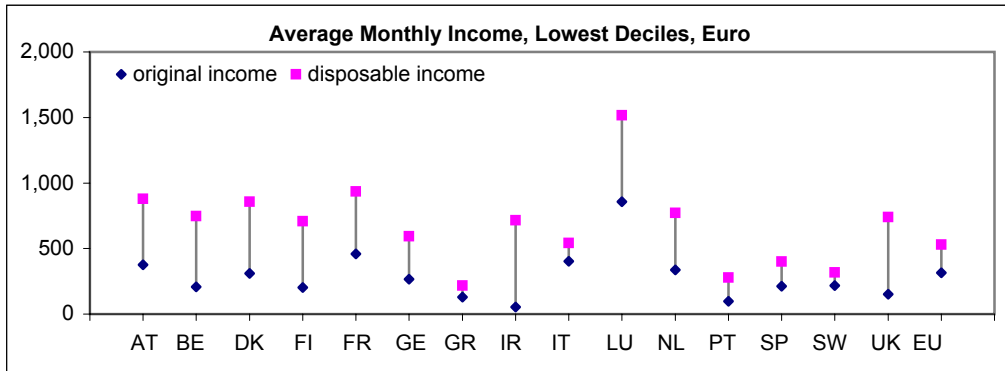
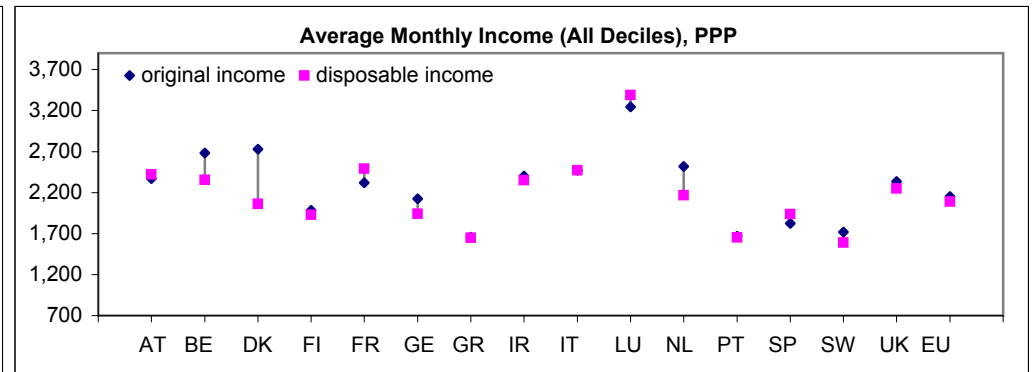
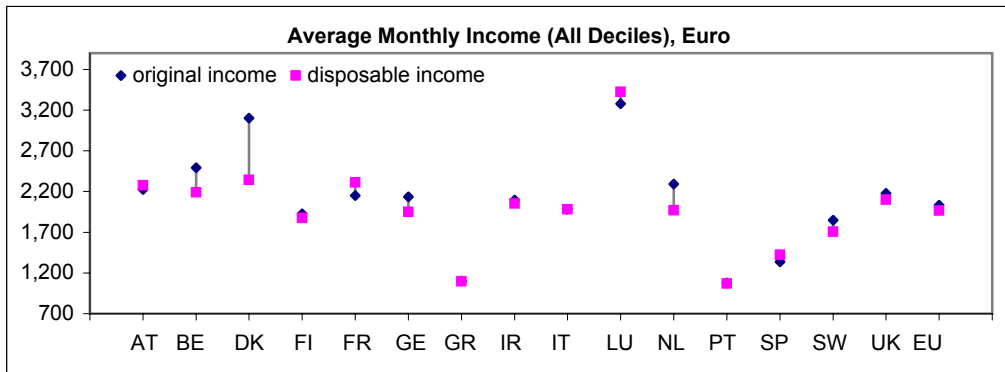
Elderly: persons aged 65 or older

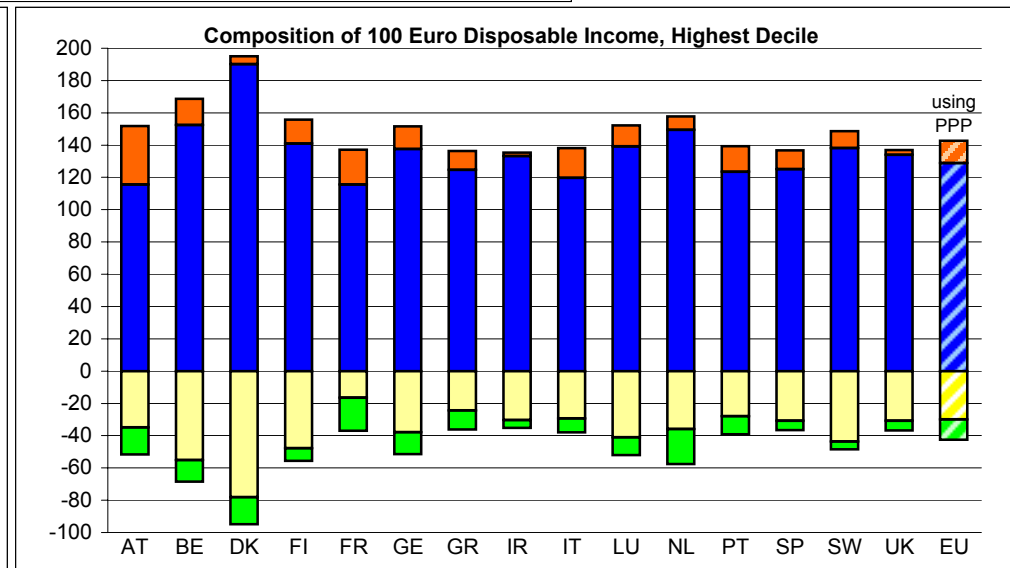
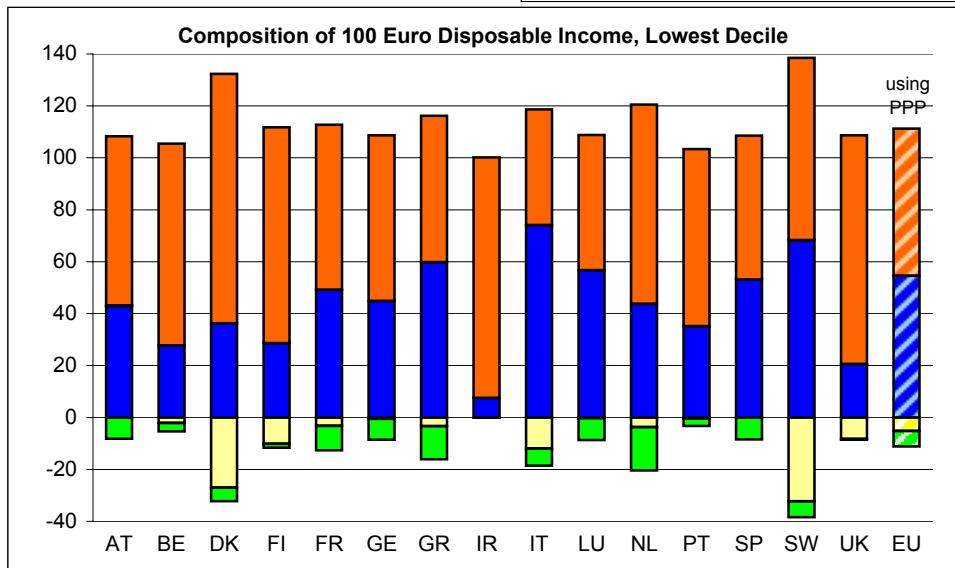
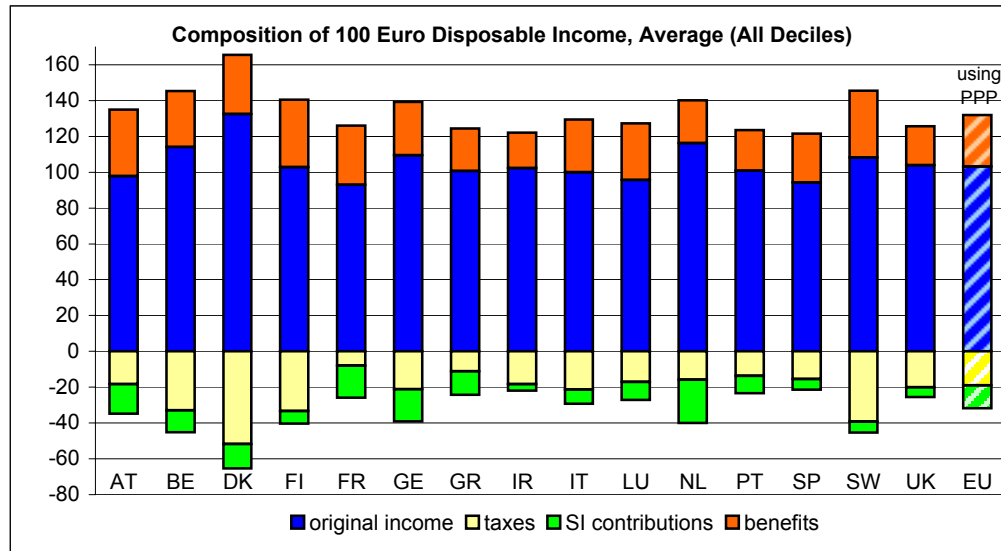
Working Aged Economically Active: working aged persons having employment or self-employment income

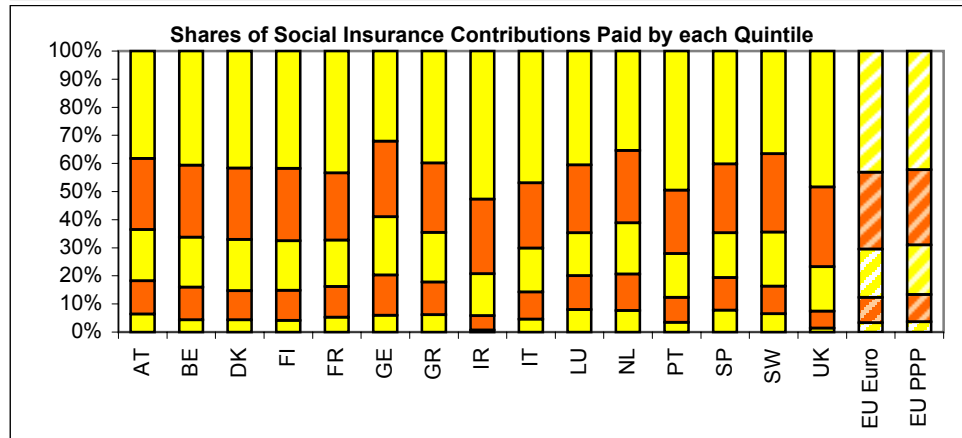
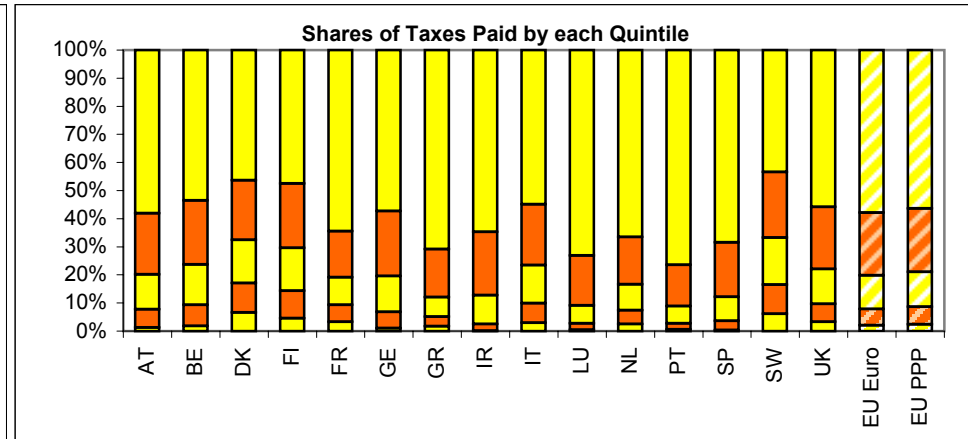
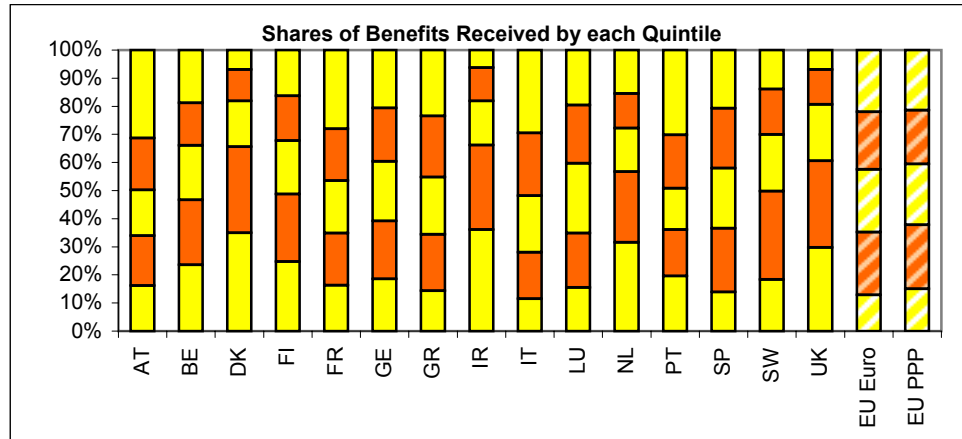
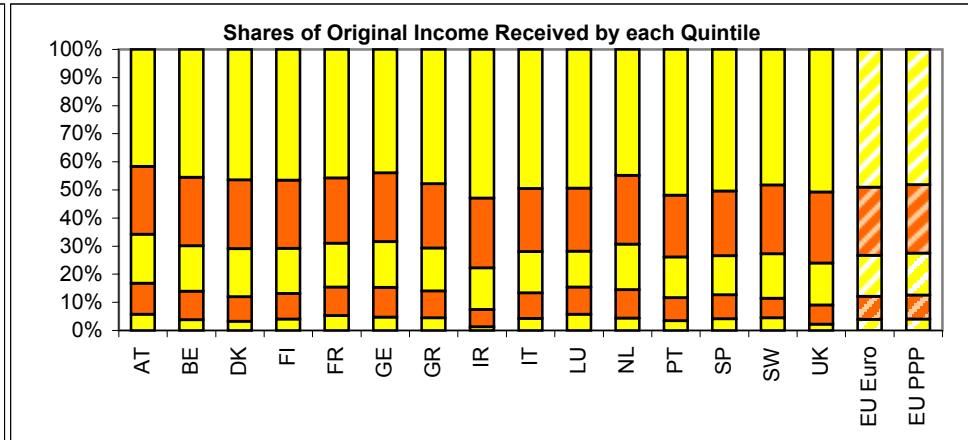
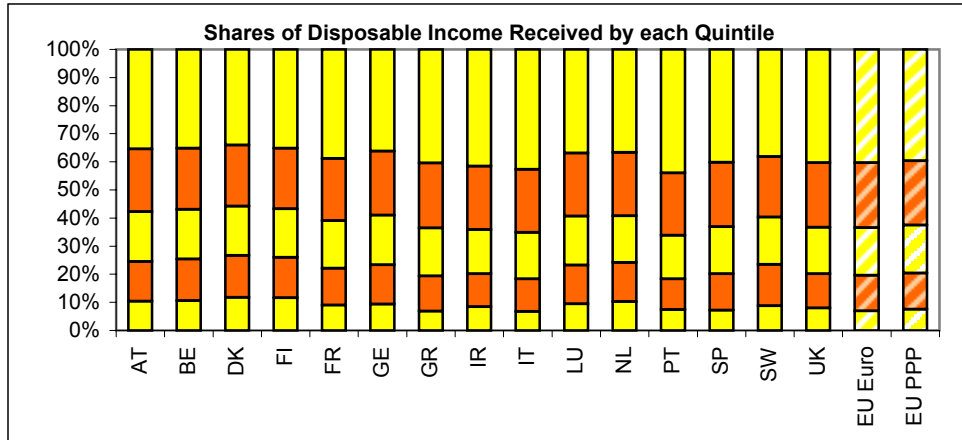
% of Working Aged Economically Active: share of working aged persons in household who are economically active

Poor: households at risk of being in poverty, i.e. with equivalised disposable income below 60% of median

Decile groups are formed by ranking according to equivalised household disposable income using the modified OECD-equivalence-scale and weighted by household size







APPENDIX 1: EUROMOD BASE DATASETS

Country	Base Dataset for EUROMOD	Date of collection	Reference time period for incomes
Austria	Austrian version of European Community Household Panel (W5)	1998+1999	annual 1998
Belgium	Panel Survey on Belgian Households	1999	annual 1998
Denmark	European Community Household Panel (W2)	1995	annual 1994
Finland	Income distribution survey	1998	annual 1998
France	Budget de Famille	1994/5	annual 1993/4
Germany	German Socio-Economic Panel (W15)	1998	annual 1997
Greece	European Community Household Panel (W2)	1995	annual 1994
Ireland	Living in Ireland Survey (W1)	1994	month in 1994
Italy	Survey of Households Income and Wealth	1996	annual 1995
Luxembourg	PSELL-2 (W5)	1999	annual 1998
Netherlands	Sociaal-economisch panelonderzoek (W3)	1996	annual 1995
Portugal	European Community Household Panel (W3)	1996	annual 1995
Spain	European Community Household Panel (W3)	1996	annual 1995
Sweden	Income distribution survey	1997	annual 1997
UK	Family Expenditure Survey	1995/6	month in 1995/6

APPENDIX 2: GERMANY 1998, simulating eligibility for social assistance

Eligibility for social assistance is simulated using family-characteristics.

In contrast in sheet 'GE' eligibility is determined by setting families eligible who receive soc.ass. in the data.

Mean of Income and Income-Components per Decile Group, EURO

Decile Group	Disposable Income	Original Income	of which Cur. Earned Inc.	All Benefits incl.Pub.Pen.	All Taxes	Social Ins. Contrib.	Simulated Benefits	Simulated Taxes
1	674	261	186	471	5	52	33.0%	100.0%
2	1,174	717	642	656	41	158	27.6%	100.0%
3	1,393	1,141	1,069	610	105	252	20.7%	100.0%
4	1,516	1,281	1,222	671	149	287	13.5%	100.0%
5	1,769	1,690	1,623	680	240	360	12.8%	100.0%
6	1,838	1,934	1,861	617	309	404	9.2%	100.0%
7	2,117	2,297	2,196	658	392	446	7.5%	100.0%
8	2,455	3,083	2,983	484	586	527	11.3%	100.0%
9	2,892	3,608	3,451	624	772	567	7.8%	100.0%
10	3,967	5,445	5,085	567	1,500	545	5.1%	100.0%
All	1,966	2,134	2,018	599	412	354	14.8%	100.0%
Poor*	686	273	198	474	6	55	32.7%	100.0%

Mean of Income and Income-Components per Decile Group, Euro adjusted for Purchasing Power Parities

Decile Group	Disposable Income	Original Income	of which Cur. Earned Inc.	All Benefits incl.Pub.Pen.	All Taxes	Social Ins. Contrib.	Simulated Benefits	Simulated Taxes
1	671	259	185	468	5	52	33.0%	100.0%
2	1,168	713	639	652	41	157	27.6%	100.0%
3	1,386	1,135	1,063	607	105	251	20.7%	100.0%
4	1,508	1,274	1,216	668	148	286	13.5%	100.0%
5	1,760	1,681	1,615	676	239	359	12.8%	100.0%
6	1,829	1,924	1,851	613	307	402	9.2%	100.0%
7	2,106	2,285	2,184	654	390	443	7.5%	100.0%
8	2,442	3,067	2,967	482	583	524	11.3%	100.0%
9	2,877	3,589	3,434	621	768	564	7.8%	100.0%
10	3,947	5,417	5,059	564	1,493	542	5.1%	100.0%
All	1,956	2,123	2,008	595	410	352	14.8%	100.0%
Poor*	683	272	197	471	6	55	32.7%	100.0%
						PPP	1.0052	

Share of Income and Income-Components received/paid by each Decile Group

Decile Group	Disposable Income	Original Income	of which Cur. Earned Inc.	All Benefits incl.Pub.Pen.	All Taxes	Social Ins. Contrib.	
1	4.4%	1.6%	1.2%	10.1%	0.2%	1.9%	
2	5.6%	3.1%	3.0%	10.2%	0.9%	4.2%	
3	6.4%	4.8%	4.8%	9.2%	2.3%	6.5%	
4	7.5%	5.8%	5.9%	10.9%	3.5%	7.9%	Poor:HH at risk of poverty
5	8.1%	7.1%	7.2%	10.2%	5.2%	9.1%	i.e. equ.disp.inc.< 60% of Median
6	9.4%	9.1%	9.3%	10.4%	7.5%	11.5%	(see also Legend)
7	10.7%	10.7%	10.8%	10.9%	9.4%	12.5%	
8	12.1%	14.0%	14.3%	7.8%	13.8%	14.4%	
9	14.4%	16.5%	16.7%	10.2%	18.3%	15.6%	
10	21.5%	27.2%	26.9%	10.1%	38.9%	16.4%	
Poor*	4.6%	1.7%	1.3%	10.5%	0.2%	2.1%	

original income	employment income + investment income + maintenance payments + property income + private pension benefits + self-employment income
taxes (sim.)	national income tax + solidarity surplus
employee sics (sim.)	employee disability soc.ins.contrib. + employee health soc.ins.contrib. + employee pension soc.ins.contrib. + employee unemployment soc.ins.contrib.
benefits (sim.)	housing benefit + child benefit + federal child raising benefit (bundeserziehungsgeld) + direct housing support (wohneigentumsfoerderung/eigenheimzulagengesetz) + post natal benefit for non-earning mothers (entbindungsgeld) + provincial child raising benefit (landeserziehungsgeld) + social assistance (sozialhilfe)
benefits (data)	student payments + unemployment payment + unemployment benefit + retraining payment + old age transition payment + own old age pension + miners' own pension + civil servants' own pension + war victims' own pension + farmers' own pension + accident own pension + widow/orphan old-age pension + miners' widow/orphan pension + civil servants' widow/orphan pension + war victims' widow/orphan pension + farmers' widow/orphan pension + accident widow/orphan pension + nursing home insurance payment received (pflegeversicherung)

APPENDIX 3: SWEDEN 1998, simulating eligibility for social assistance

Eligibility for social assistance is simulated using family-characteristics.

In contrast in sheet 'SW' eligibility is determined by setting families eligible who receive soc.ass. in the data.

Mean of Income and Income-Components per Decile Group, EURO

Decile Group	Disposable Income	Original Income	of which Cur. Earned Inc.	All Benefits incl.Pub.Pen.	All Taxes	Social Ins. Contrib.	Simulated Benefits	Simulated Taxes
1	653	356	283	512	186	29	32.6%	100.0%
2	999	325	265	882	180	28	45.7%	100.0%
3	1,043	376	306	911	211	32	44.1%	100.0%
4	1,243	750	630	922	369	60	29.4%	100.0%
5	1,539	1,443	1,281	784	585	104	14.0%	100.0%
6	1,772	1,913	1,730	696	704	133	15.5%	100.0%
7	1,944	2,295	2,093	609	803	155	12.4%	100.0%
8	2,168	2,740	2,477	542	937	176	11.7%	100.0%
9	2,629	3,543	3,160	511	1,213	212	11.0%	100.0%
10	4,690	6,476	4,432	493	2,050	230	9.4%	100.0%
All	1,769	1,846	1,519	699	669	107	26.6%	100.0%
Poor*	473	307	246	348	157	26	31.7%	100.0%

Mean of Income and Income-Components per Decile Group, Euro adjusted for Purchasing Power Parities

Decile Group	Disposable Income	Original Income	of which Cur. Earned Inc.	All Benefits incl.Pub.Pen.	All Taxes	Social Ins. Contrib.	Simulated Benefits	Simulated Taxes
1	608	331	263	477	173	27	32.6%	100.0%
2	929	302	247	820	167	26	45.7%	100.0%
3	970	349	284	847	196	30	44.1%	100.0%
4	1,156	698	586	857	343	56	29.4%	100.0%
5	1,432	1,342	1,191	730	544	96	14.0%	100.0%
6	1,648	1,780	1,610	648	655	124	15.5%	100.0%
7	1,809	2,134	1,946	566	747	145	12.4%	100.0%
8	2,017	2,548	2,304	504	872	164	11.7%	100.0%
9	2,446	3,296	2,939	475	1,128	197	11.0%	100.0%
10	4,362	6,024	4,123	459	1,907	214	9.4%	100.0%
All	1,646	1,717	1,413	650	622	100	26.6%	100.0%
Poor*	440	286	229	324	146	24	31.7%	100.0%
							PPP	1.08

Share of Income and Income-Components received/paid by each Decile Group

Decile Group	Disposable Income	Original Income	of which Cur. Earned Inc.	All Benefits incl.Pub.Pen.	All Taxes	Social Ins. Contrib.	
1	4.4%	2.3%	2.2%	8.6%	3.3%	3.2%	
2	6.9%	2.2%	2.1%	15.4%	3.3%	3.3%	
3	6.6%	2.3%	2.2%	14.5%	3.5%	3.4%	
4	8.3%	4.8%	4.9%	15.5%	6.5%	6.6%	Poor:HH at risk of poverty
5	7.8%	7.0%	7.5%	10.0%	7.8%	8.7%	i.e. equ.disp.inc.< 60% of Median
6	8.5%	8.8%	9.6%	8.4%	8.9%	10.5%	(see also Legend)
7	9.7%	11.0%	12.2%	7.7%	10.6%	12.8%	
8	11.1%	13.5%	14.8%	7.0%	12.7%	15.0%	
9	13.0%	16.8%	18.2%	6.4%	15.8%	17.3%	
10	23.8%	31.5%	26.2%	6.3%	27.5%	19.3%	
Poor*	2.1%	1.3%	1.3%	3.9%	1.8%	1.9%	

original income employment income + investment income + maintenance payments + private pension benefits + self-employment income

taxes (sim.) real estate taxation + net tax on investment + local income taxes - tax reduction due to negative tax on investment income + net national income tax + net tax on wealth

employee sics (sim.) general pension fee

benefits (sim.) child benefits + housing benefits + housing benefit supplement for pensioners + parental allowance + social assistance

benefits (data) sick benefits + unemployment benefits total + resid. tax free educational benefits + residual tax-free benefits + university grants + other taxable pensions + non-taxable pension + study grants for high school

APPENDIX 4: DECILE POINTS

Decile Group Upper Limits, EURO

Decile Group	AT	BE	DK	FI	FR	GE	GR	IR	IT	LU	NL	PT	SP	SW	UK	GESim	SWsim
1	738	708	844	687	675	670	206	433	390	1,040	683	196	281	625	563	704	790
2	898	875	999	805	800	830	306	525	514	1,227	792	255	377	837	672	843	875
3	1,023	988	1,136	911	922	955	374	611	624	1,406	894	310	456	922	792	957	930
4	1,123	1,099	1,284	1,017	1,046	1,068	444	745	746	1,589	1,018	369	528	1,033	936	1,069	1,036
5	1,248	1,218	1,421	1,123	1,193	1,182	516	889	872	1,786	1,139	438	601	1,154	1,117	1,184	1,156
6	1,375	1,346	1,571	1,246	1,362	1,320	594	1,041	1,019	1,985	1,272	505	694	1,282	1,286	1,322	1,282
7	1,540	1,487	1,717	1,381	1,559	1,499	706	1,217	1,181	2,266	1,440	608	823	1,438	1,495	1,501	1,438
8	1,751	1,690	1,922	1,568	1,829	1,730	849	1,424	1,398	2,616	1,653	738	988	1,633	1,796	1,730	1,633
9	2,112	1,999	2,276	1,861	2,314	2,107	1,078	1,787	1,792	3,214	1,989	1,002	1,286	1,987	2,295	2,107	1,987

Decile Group Upper Limits,, Euro adjusted for Purchasing Power Parities

Decile Group	AT	BE	DK	FI	FR	GE	GR	IR	IT	LU	NL	PT	SP	SW	UK	GESim	SWsim
1	786	762	742	707	728	667	310	496	487	1,029	751	303	383	581	603	700	735
2	956	941	879	829	862	825	460	602	641	1,214	871	394	513	778	720	838	814
3	1,089	1,063	1,000	938	994	950	563	700	779	1,391	982	479	621	857	849	952	865
4	1,195	1,182	1,130	1,047	1,128	1,062	669	853	931	1,572	1,119	571	719	961	1,002	1,064	963
5	1,329	1,309	1,251	1,157	1,285	1,176	777	1,018	1,088	1,767	1,252	678	818	1,074	1,197	1,178	1,075
6	1,463	1,448	1,383	1,283	1,468	1,313	893	1,192	1,272	1,964	1,398	782	946	1,192	1,377	1,315	1,192
7	1,639	1,600	1,511	1,422	1,680	1,491	1,062	1,394	1,474	2,242	1,583	940	1,122	1,337	1,601	1,493	1,338
8	1,864	1,818	1,692	1,614	1,972	1,721	1,278	1,631	1,744	2,588	1,816	1,142	1,345	1,519	1,924	1,721	1,519
9	2,248	2,150	2,003	1,916	2,494	2,096	1,622	2,047	2,236	3,180	2,186	1,550	1,752	1,848	2,458	2,096	1,848

Decile groups are formed by ranking according to equivalised household disposable income using the modified OECD-equivalence-scale and weighted by household size.